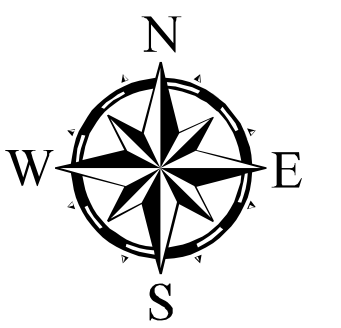
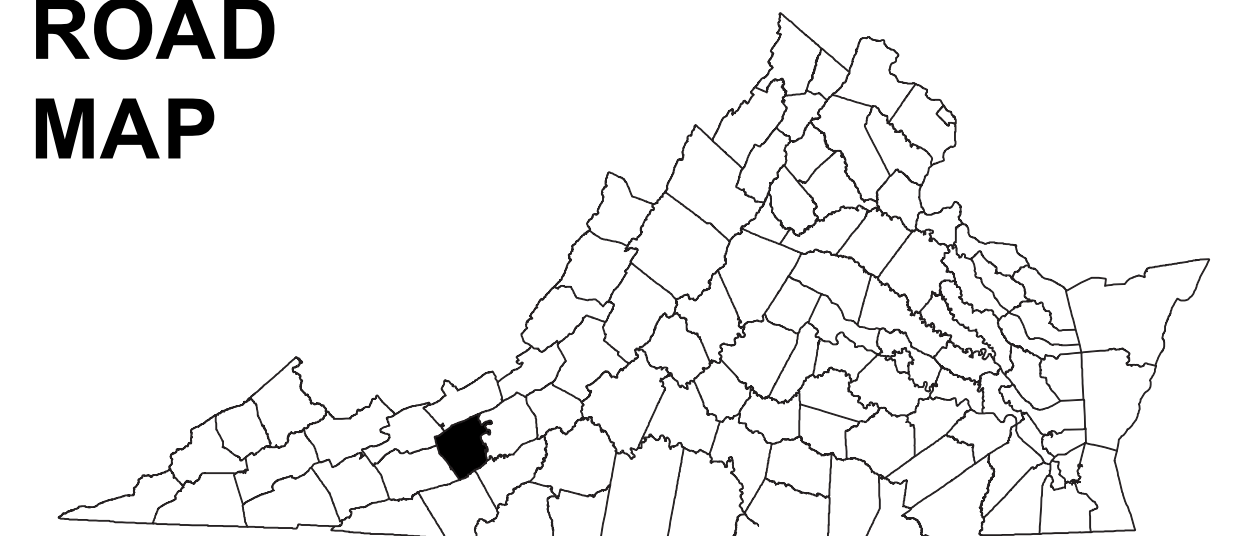


PULASKI COUNTY, VA



COUNTY ROAD MAP



PULASKI COUNTY

ROAD CLASSIFICATIONS

- Frontage Road
- Secondary Route
- State Route
- U.S. Route
- Urban Road
- Light Surface
- Divided Hwy Interstate
- All Weather Surface
- Unsurfaced
- other Surface
- Bike Routes
- Appalachian Trail
- Scenic Roads

MISCELLANEOUS

- Schools
- Seaports
- Park_Ride Lots

AIRPORTS

- Commercial
- General
- Military

RAILROADS

- Metro
- VA Railroads
- Park_N_Ride

BOUNDARIES

- Military Areas
- Magisterial Districts
- Incorp_Areas
- Natural_LandCover

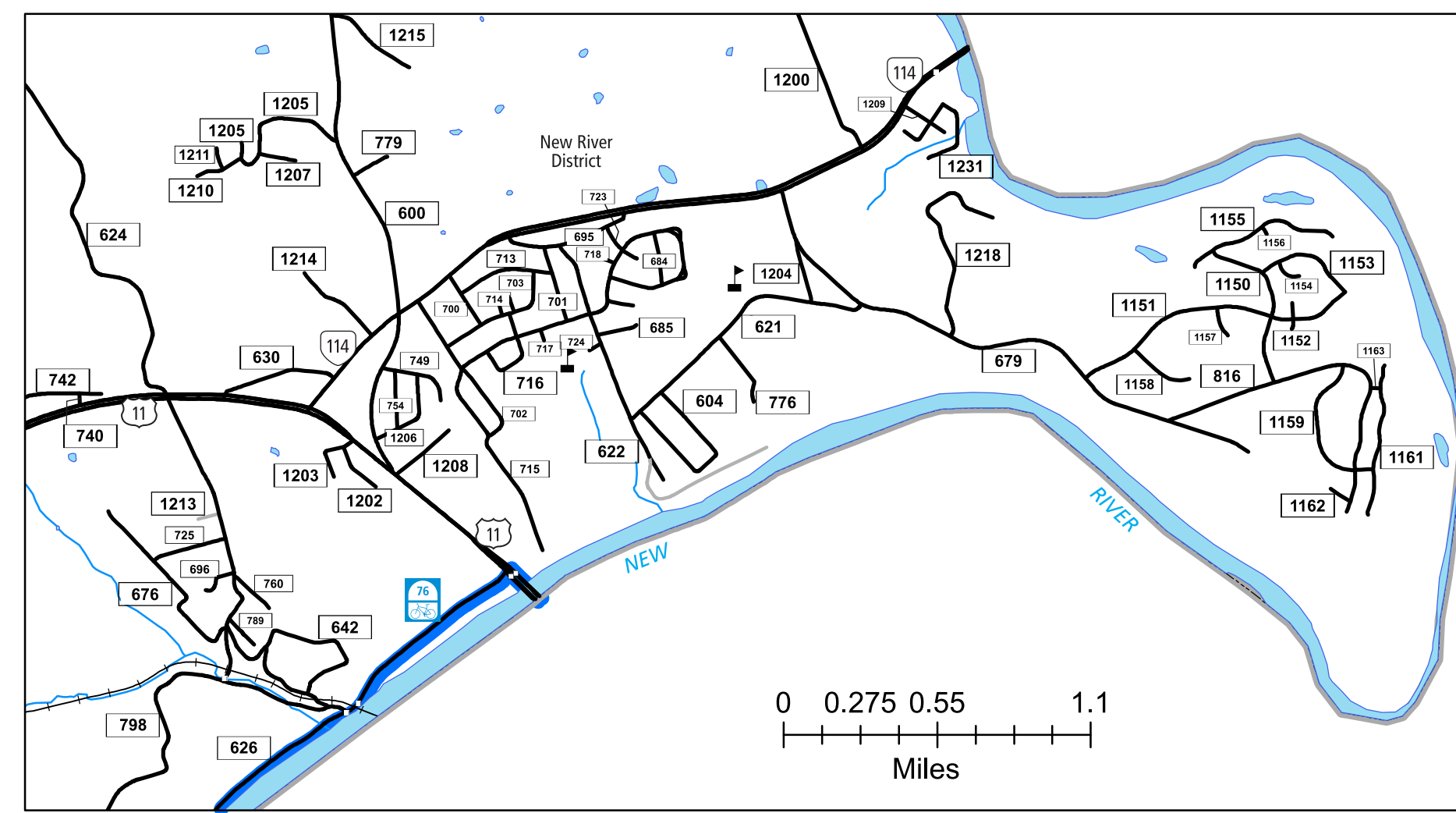
Additional ROAD CLASSIFICATION (Post 2019)

Hard-surface

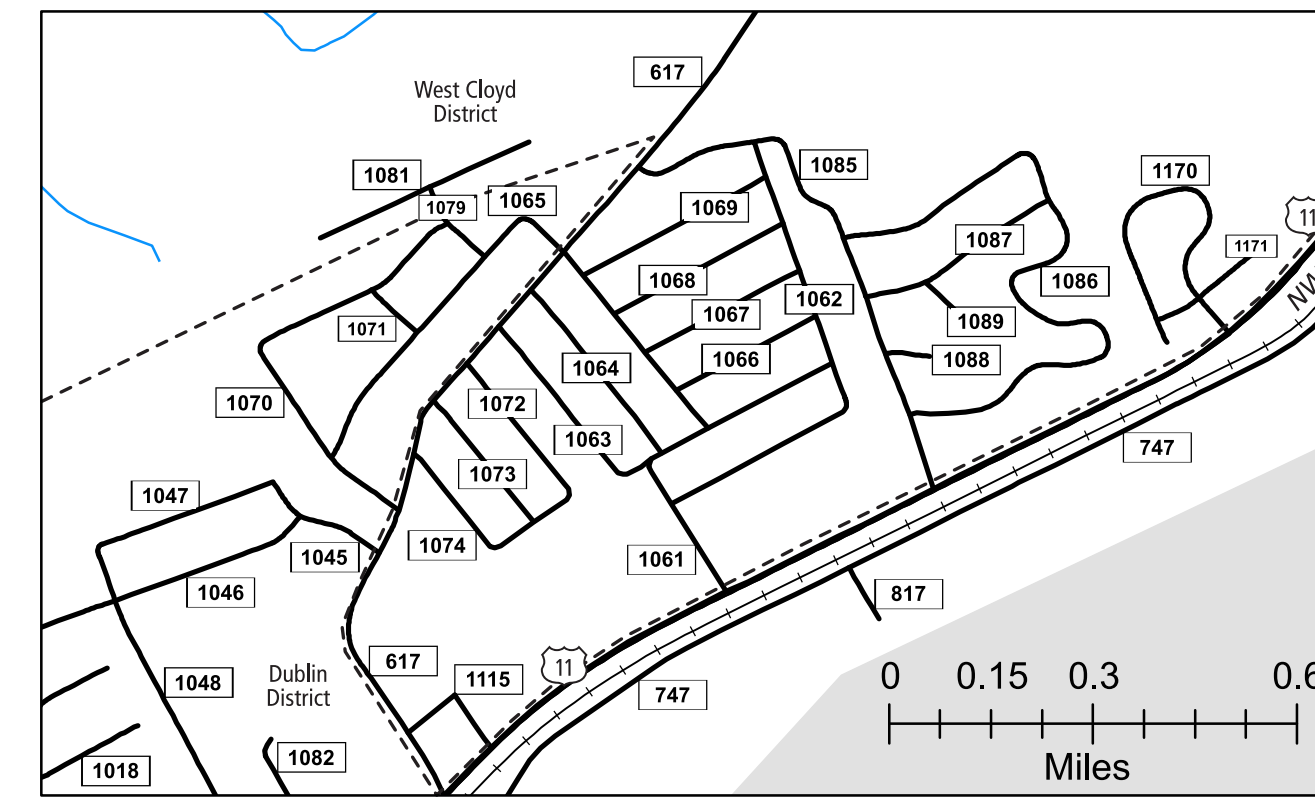


The accuracy or completeness of this map is not guaranteed or warranted. Map depicts state-maintained highway network as of May 1, 2021. Copyright © 2021 by Commonwealth of Virginia Department of Transportation, All Rights Reserved

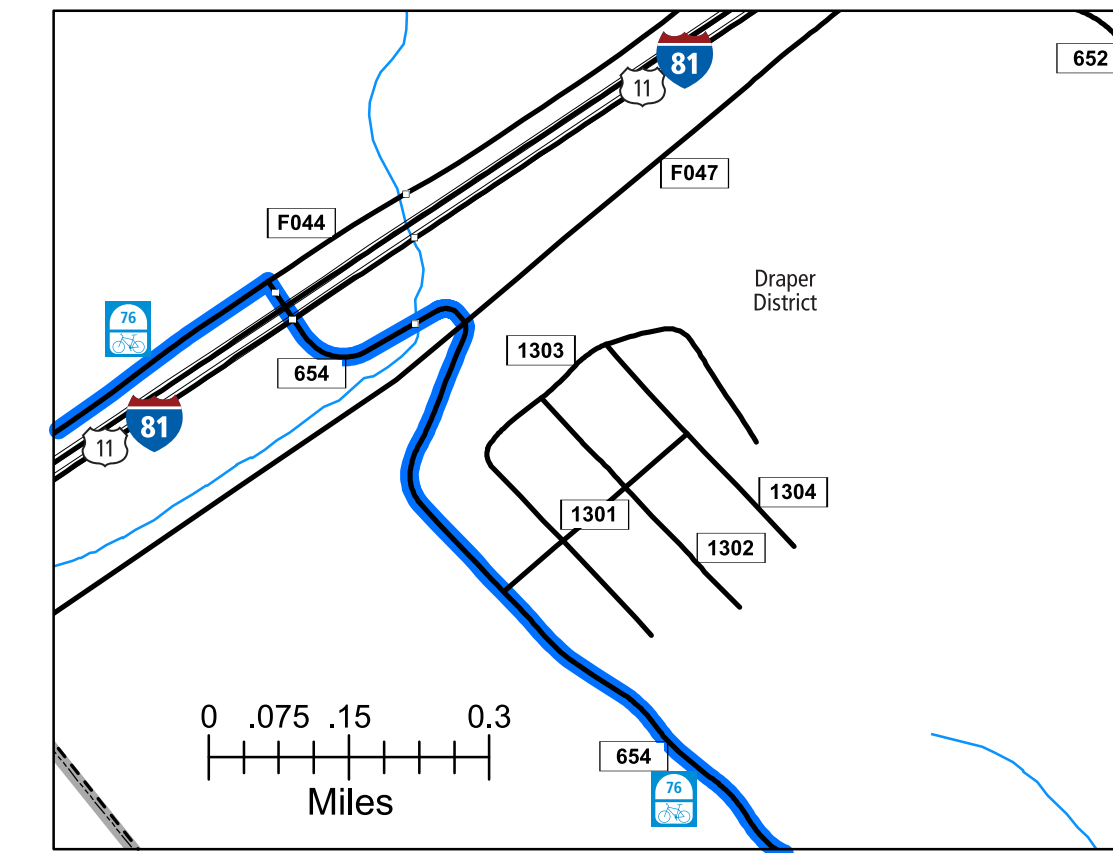
AN INVENTORY OF STATE MAINTAINED ROADS



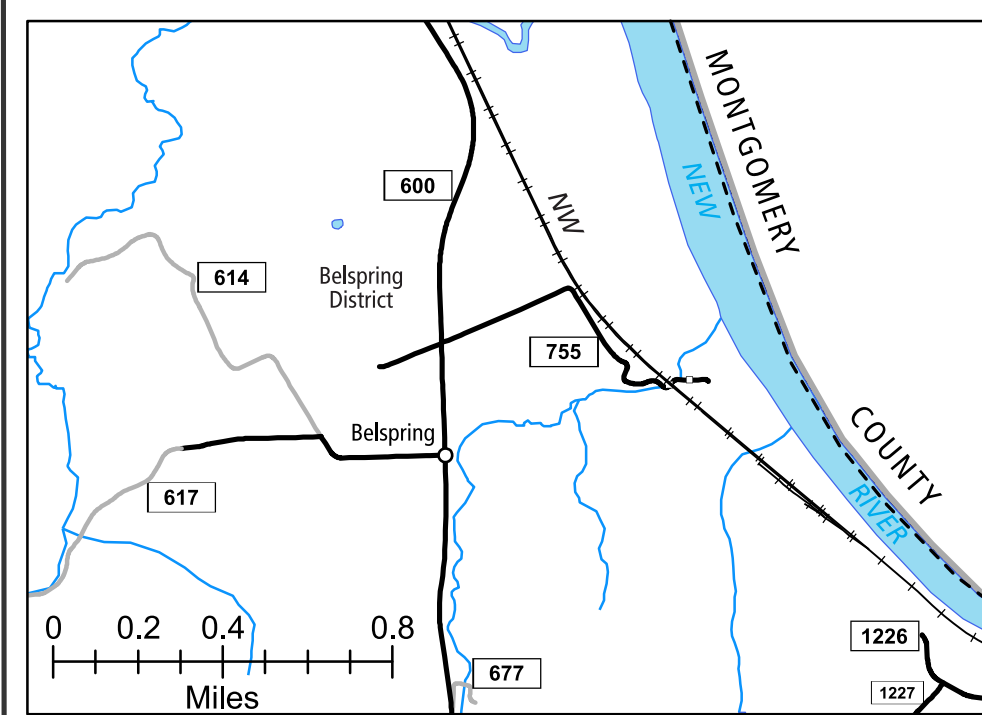
1 FAIRLAWN AREA



4 HIGHLAND PARK & OAKVIEW AREA



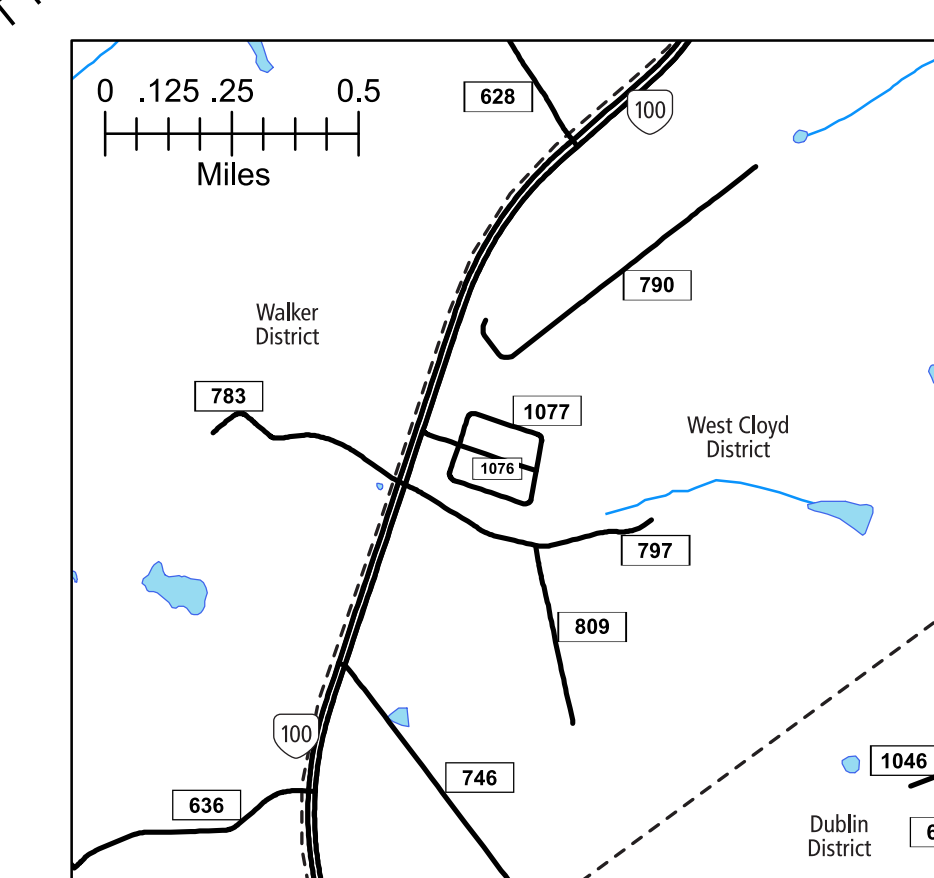
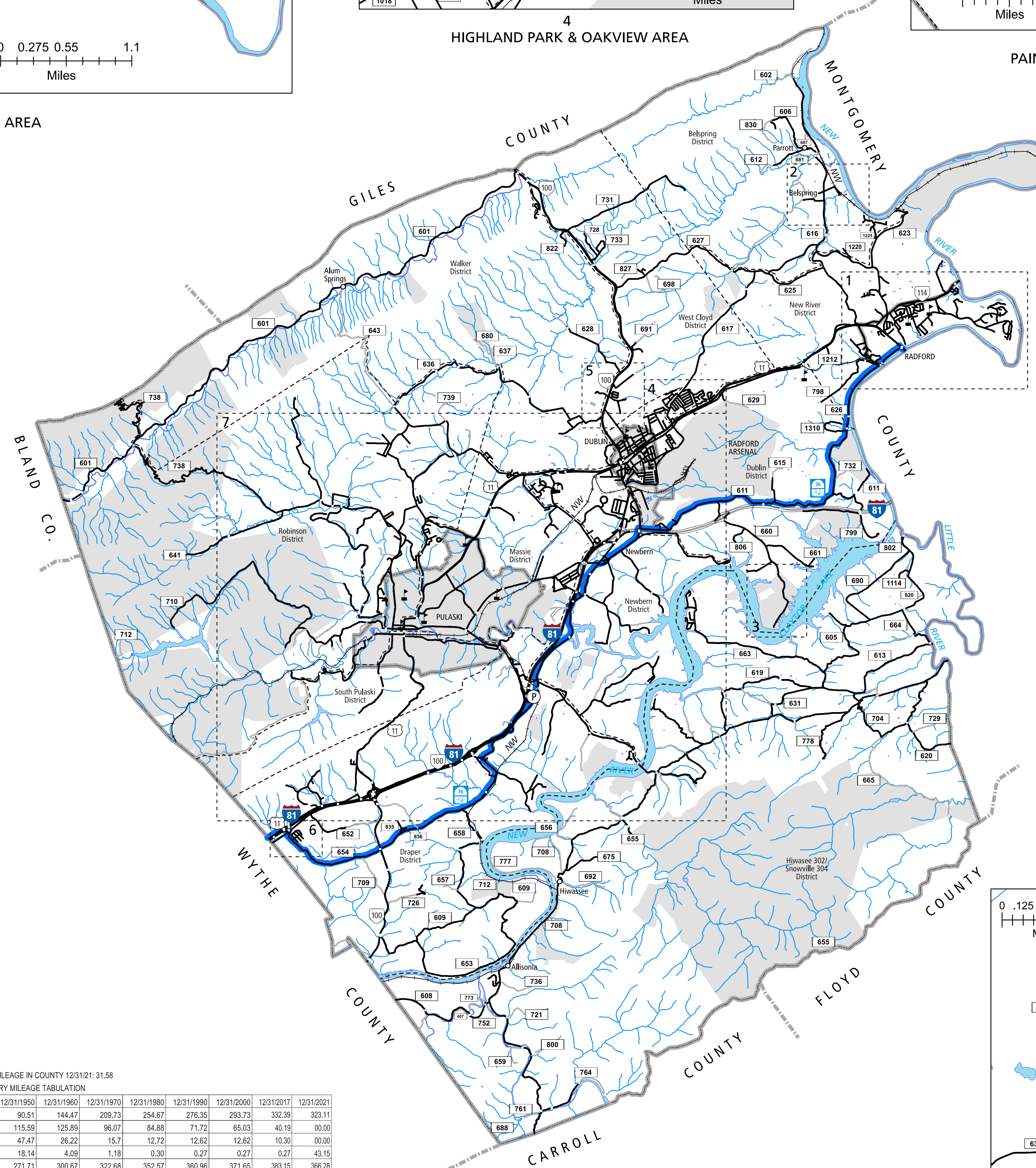
6 PAINTER WOODS AREA



2 BELSPRING AREA



3 CLAYTOR LAKE STATE PARK



5 AREA NORTH OF DUBLIN

TOTAL PRIMARY MILEAGE IN COUNTY 12/31/21: 31.58

SECONDARY MILEAGE TABULATION

TYPE	7/1/1932	7/1/1934	7/1/1941	TYPE	12/31/1950	12/31/1960	12/31/1970	12/31/1980	12/31/1990	12/31/2000	12/31/2017	12/31/2021
BIT_SUR_PAVED	46.60	42.68	54.93	HARD SURFACE	90.51	144.47	209.73	254.67	276.35	293.73	332.39	323.11
GRAVEL_SOIL_ETC.	35.00	125.93	159.81	ALL WEATHER SURFACE	115.59	125.89	96.07	84.88	71.72	65.03	40.19	00.00
GRADED & DRAINED	9.50	14.05	24.09	LIGHT SURFACE	47.47	26.22	15.7	12.72	12.62	12.62	10.30	00.00
UNIMPROVED	175.87	113.02	26.96	UNSURFACED	18.14	4.09	1.18	0.30	0.27	0.27	0.27	43.15
TOTAL MILEAGE	266.97	295.68	265.59	TOTAL MILEAGE	271.71	300.67	322.68	352.57	360.96	371.65	383.15	366.28