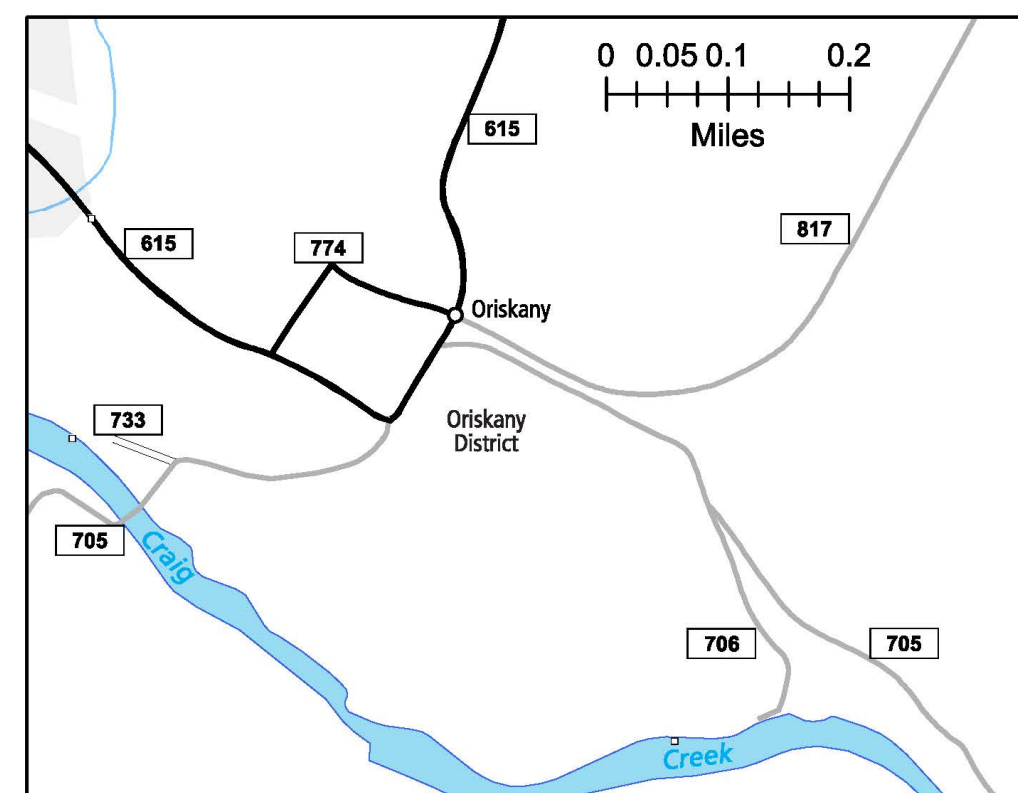
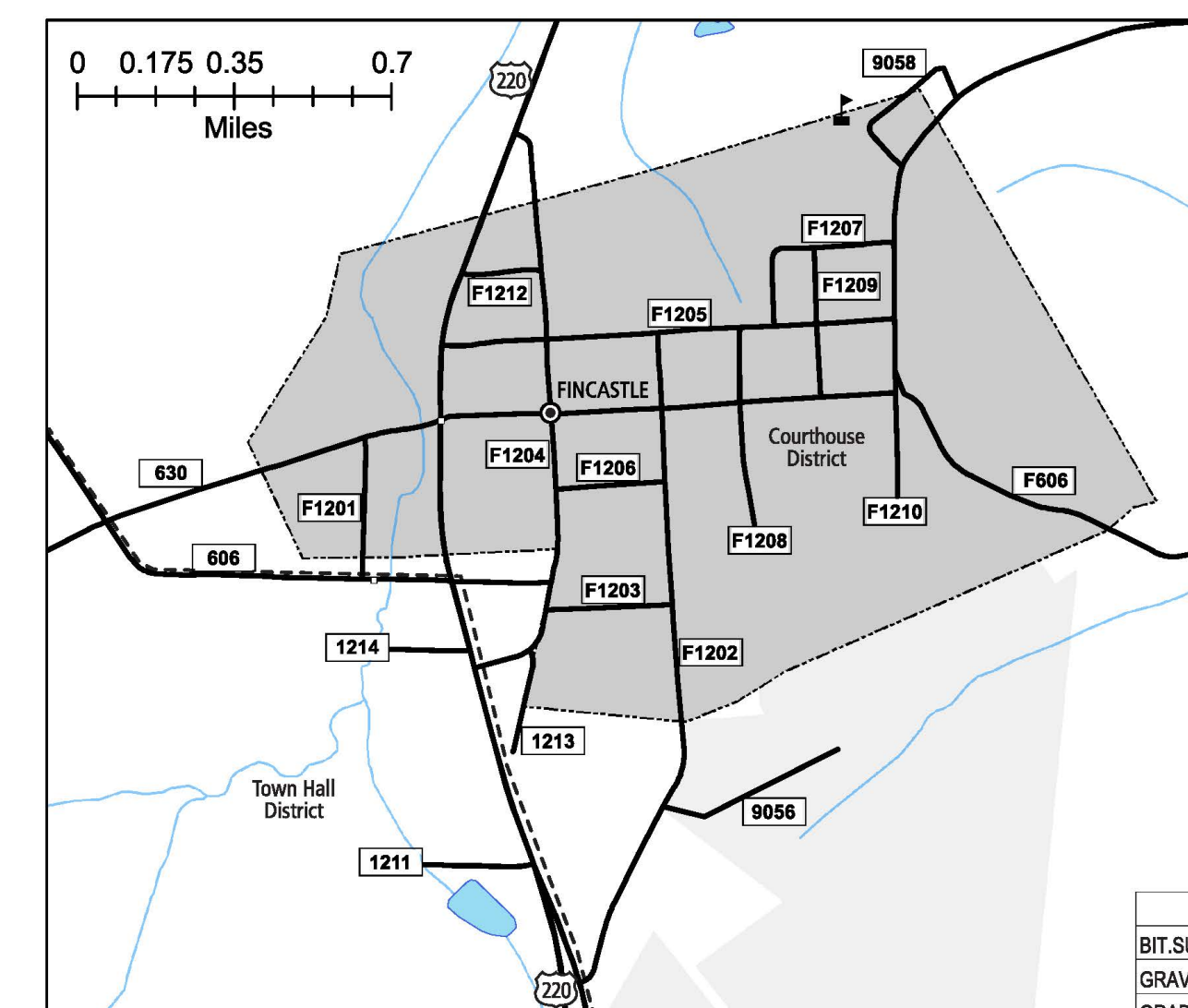


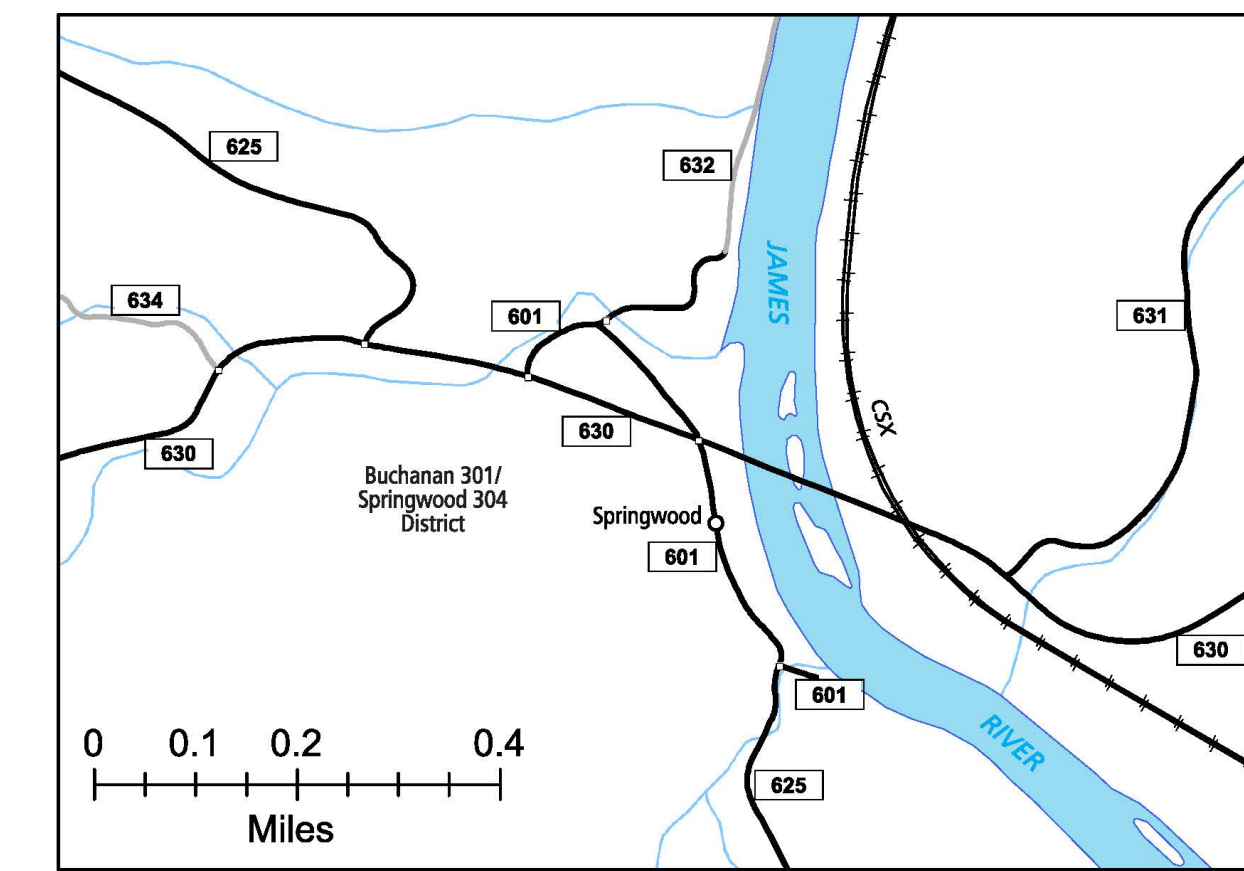
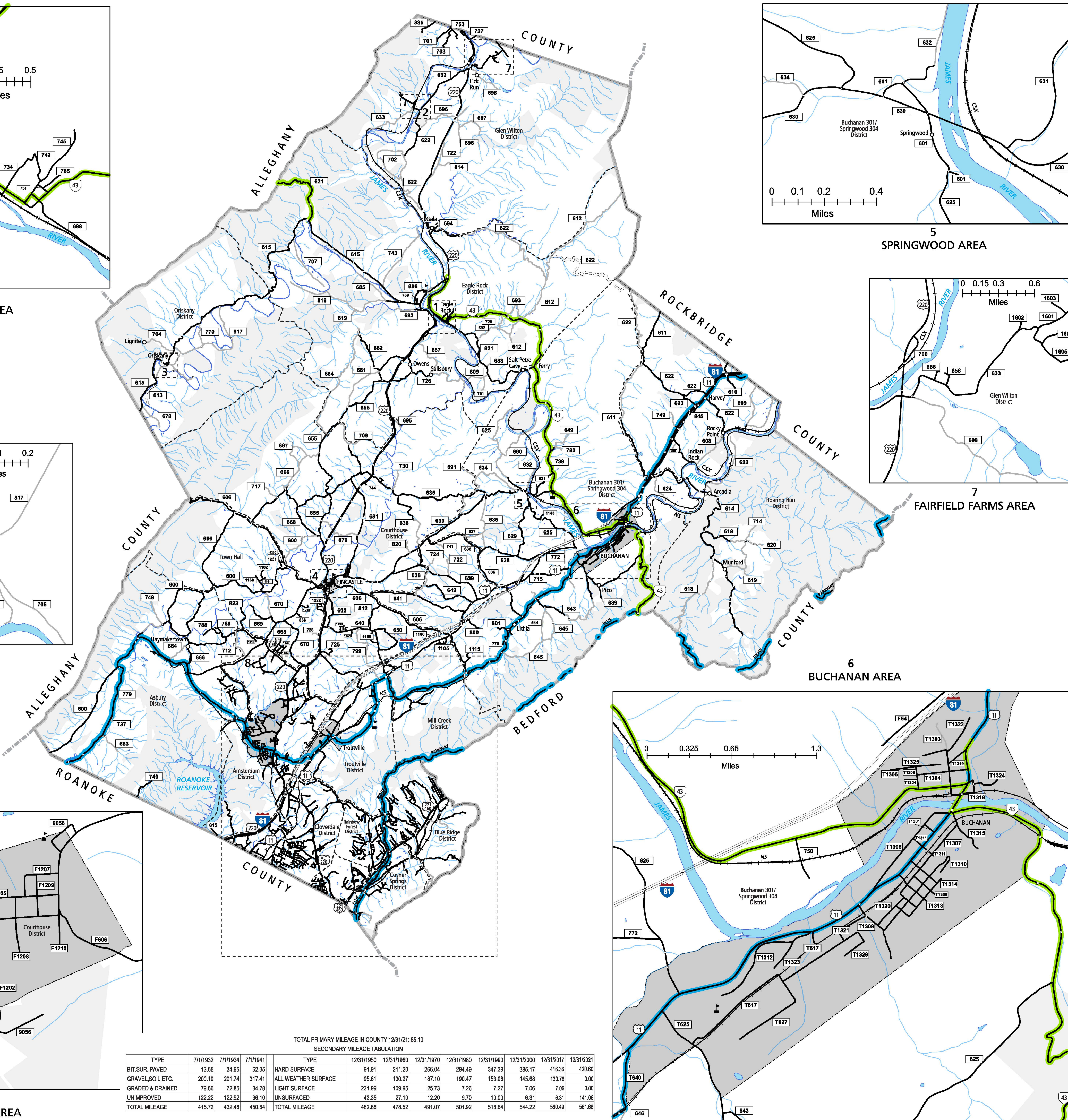
1 EAGLE ROCK AREA



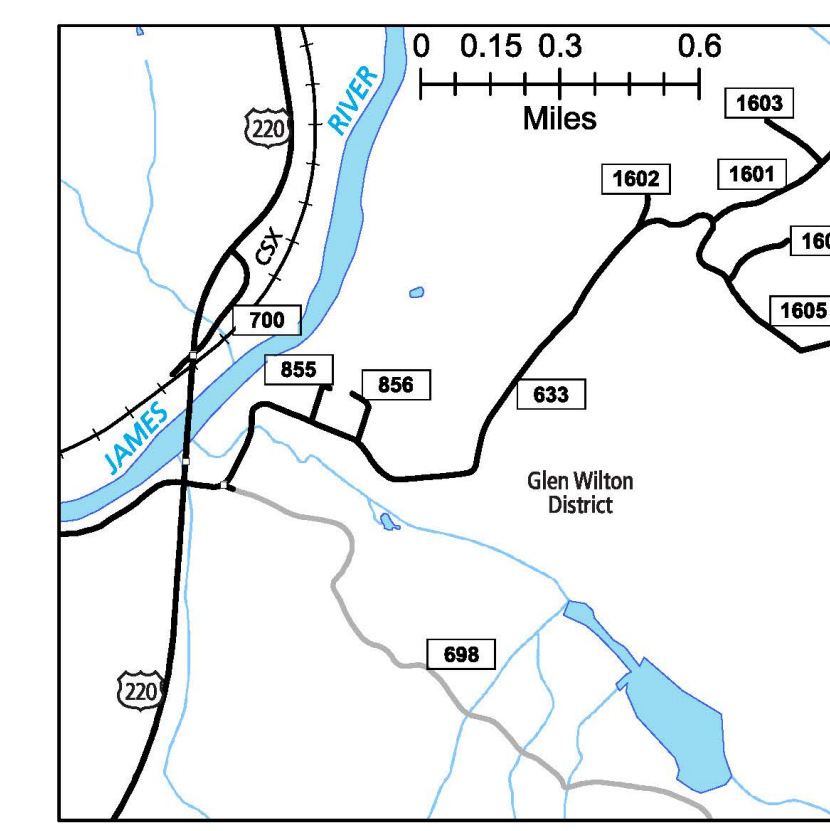
3 ORISKANY AREA



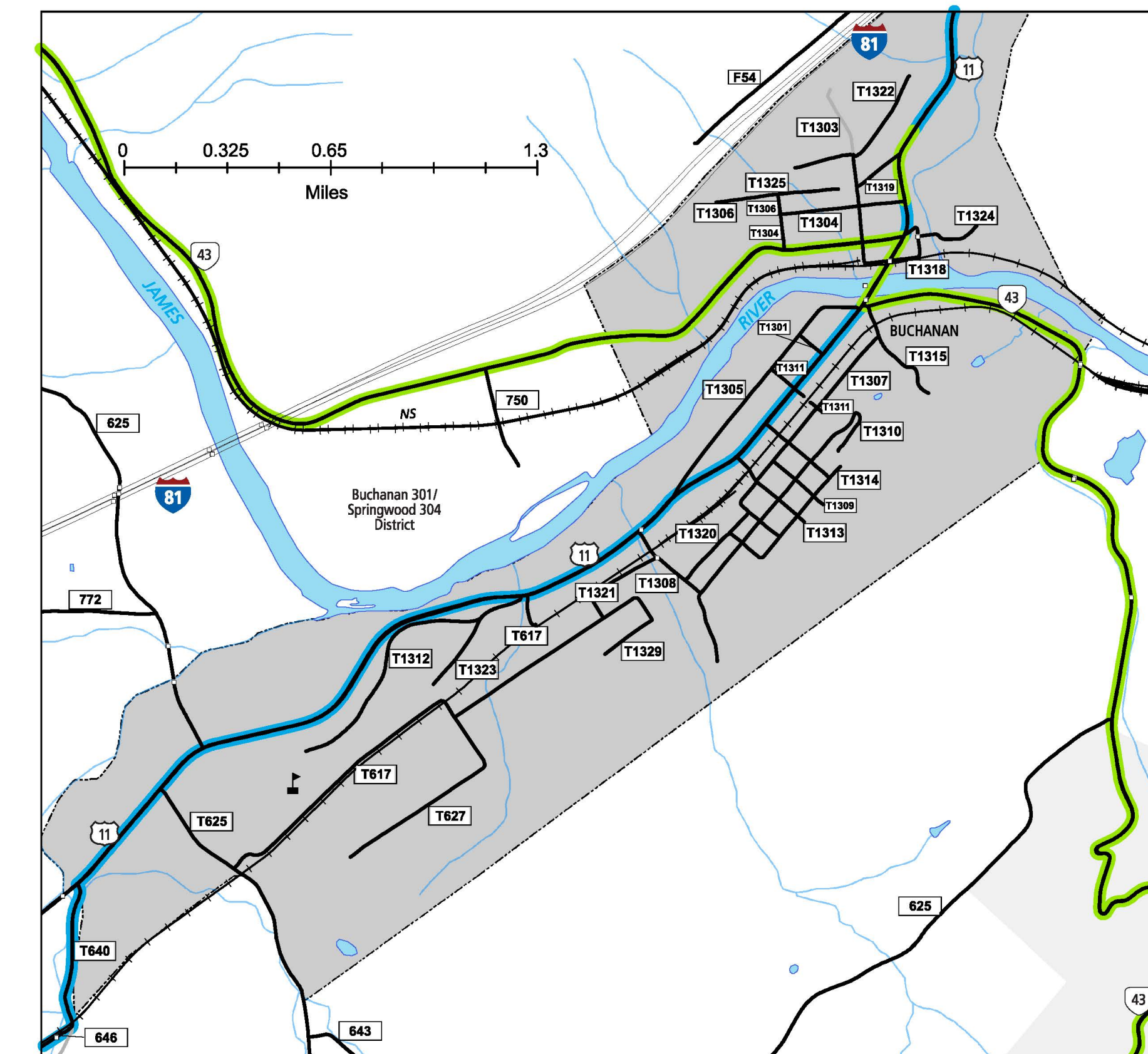
4 FINCASTLE AREA



5 SPRINGWOOD AREA

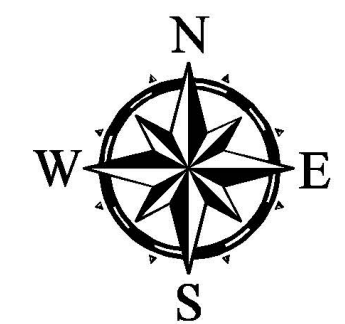


7 FAIRFIELD FARMS AREA

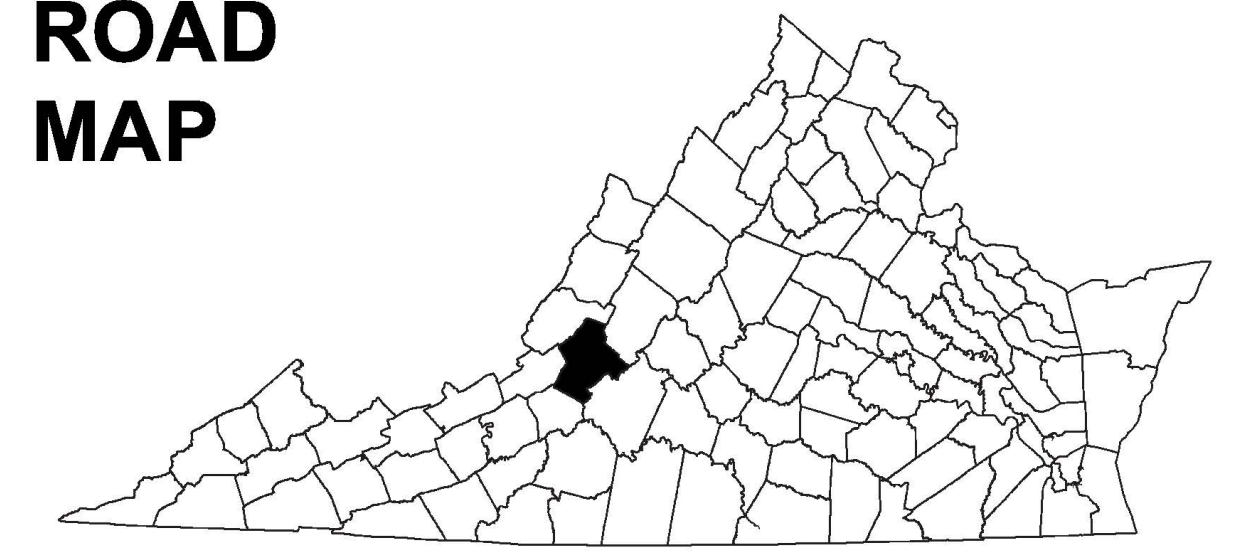


6 BUCHANAN AREA

BOTETOURT COUNTY, VA



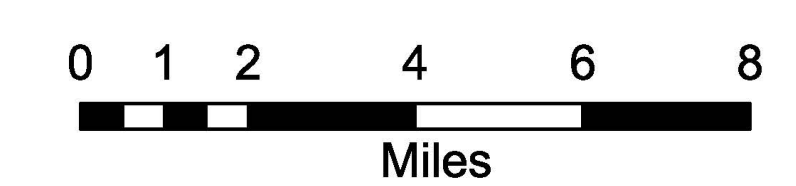
COUNTY ROAD MAP



BOTETOURT COUNTY

- | | |
|-----------------------------|------------------------|
| ROAD CLASSIFICATIONS | MISCELLANEOUS |
| — F600 — Frontage Road | 🏫 Schools |
| — 600 — Secondary Route | ⚓ Seaports |
| — 2 — State Route | 🅑 Park_Ride/Lots |
| — 1 — U.S. Route | AIRPORTS |
| — Urban Road | ✈ Commercial |
| — LightSurface | ✈ General |
| — 95 — DividedHwyInterstate | ✈ Military |
| — AllWeatherSurface | RAILROADS |
| — Unsurfaced | 🚇 Metro |
| — otherSurface | 🚆 VARailroads |
| — BikeRoutes | 🅑 Park_N_Ride |
| — AppalachianTrail | BOUNDARIES |
| — Scenic Roads | 🏠 MilitaryAreas |
| | 🏠 MagisterialDistricts |
| | 🏠 Incorp_Areas |
| | 🏠 Natural_LandCover |

Additional ROAD CLASSIFICATION (Post 2019)
Hard-surface



The accuracy or completeness of this map is not guaranteed or warranted. Map depicts state-maintained highway network as of November 1, 2022. Copyright © 2022 by Commonwealth of Virginia Department of Transportation, All Rights Reserved

AN INVENTORY OF STATE MAINTAINED ROADS

TOTAL PRIMARY MILEAGE IN COUNTY 12/31/21: 85.10

SECONDARY MILEAGE TABULATION

TYPE	7/1/1932	7/1/1934	7/1/1941	TYPE	12/31/1950	12/31/1960	12/31/1970	12/31/1980	12/31/1990	12/31/2000	12/31/2017	12/31/2021
BIT_SUR_PAVED	13.65	34.95	62.35	HARD SURFACE	91.91	211.20	266.04	294.49	347.39	385.17	416.36	420.60
GRAVEL_SOI.ETC.	200.19	201.74	317.41	ALL WEATHER SURFACE	95.61	130.27	187.10	190.47	153.98	145.68	130.76	0.00
GRADED & DRAINED	79.66	72.85	34.78	LIGHT SURFACE	231.99	109.95	25.73	7.26	7.27	7.06	7.06	0.00
UNIMPROVED	122.22	122.92	36.10	UNSURFACED	43.35	27.10	12.20	9.70	10.00	6.31	6.31	141.06
TOTAL MILEAGE	415.72	432.46	450.64	TOTAL MILEAGE	462.86	478.52	491.07	501.92	518.64	544.22	560.49	561.66