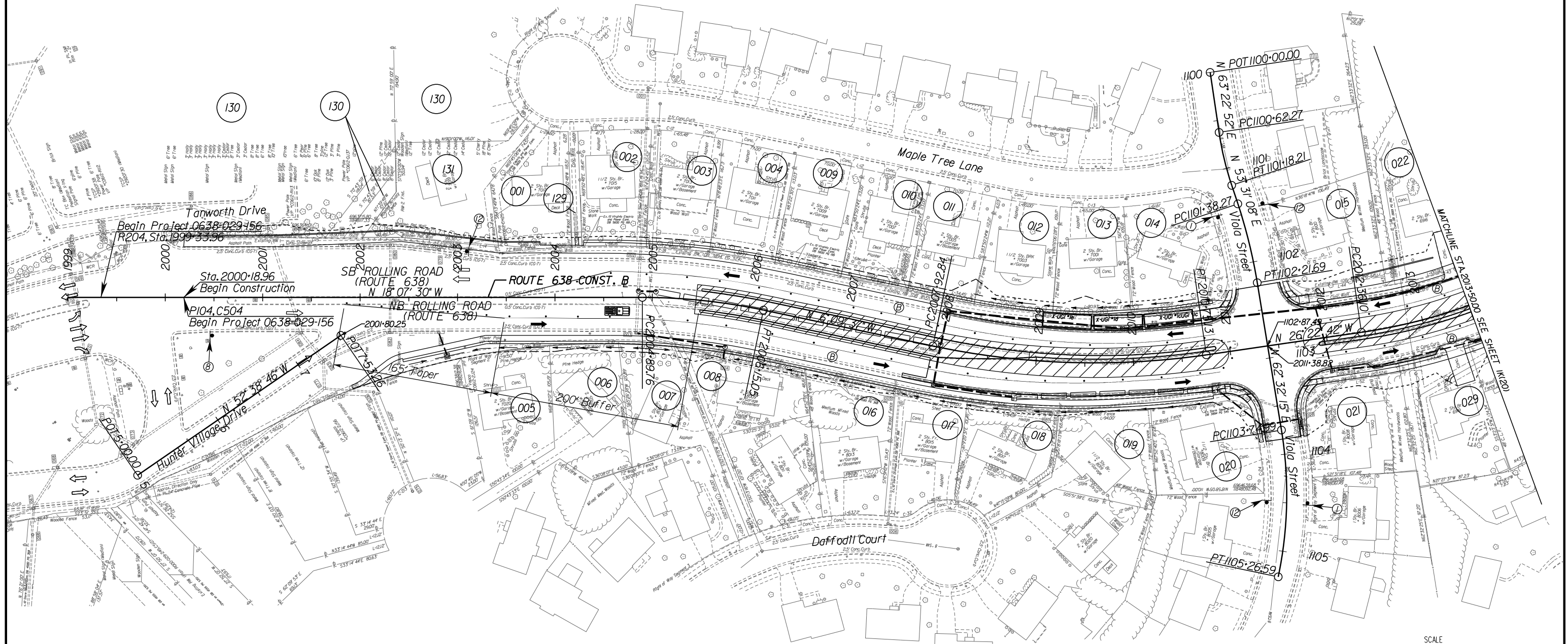


PROJECT MANAGER: Chris Barksdale, PE (703) 259-2768 JNO/AL
SURVEYED BY, DATE: Brian Elstner, L.S. (703) 259-2355 JNO/AL, August 2015
DESIGN BY: Tyler Long, PE - Whitman, Requardt & Associates, (703) 293-9072
SUBSURFACE UTILITY BY, DATE: So Deep, Inc., (703) 361-6005, August 2015

TRANSPORTATION MANAGEMENT PLAN PHASE 4

REVISED	STATE	ROUTE	STATE PROJECT	SHEET NO.
	VA.	638	0638-029-156 P-104, R-204, C-504	1K(19)
DESIGN FEATURES RELATING TO CONSTRUCTION OR TO REGULATION AND CONTROL OF TRAFFIC MAY BE SUBJECT TO CHANGE AS DEEMED NECESSARY BY THE DEPARTMENT				
Whitman, Requardt & Associates Fairfax, Virginia ROADWAY ENGINEER				



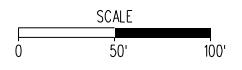
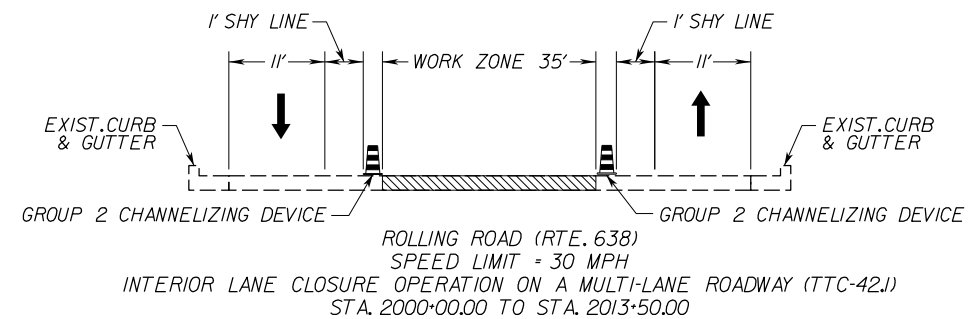
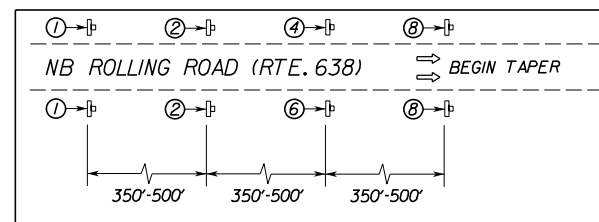
LEGEND

- WORK ZONE AREA
- GROUP 2 CHANNELIZING DEVICE
- TYPE 3 BARRICADE
- TRAFFIC BARRIER SERVICE
- TL-2 TEMP. ATTENUATOR
- SIGN
- EXISTING DIRECTION OF TRAVEL
- TEMPORARY DIRECTION OF TRAVEL
- WORK VEHICLE

NOTES

- 1) SEE SHEET 1(K1) FOR SIGN LEGEND.
- 2) PROJECT LIMITS SIGNING SHALL BE IN ACCORDANCE WITH FIGURE TTC-53.0 OF THE 2011 WAPM.
- 3) INSIDE LANE CLOSURE ON ROLLING ROAD SHALL BE IN ACCORDANCE WITH FIGURE TTC-17.0 OF THE 2011 WAPM.
- 4) MAINTAIN ACCESS TO ENTRANCES THROUGHOUT DURATION OF CONSTRUCTION.
- 5) ALL CHANNELIZING DEVICE SPACING SHALL BE IN ACCORDANCE WITH TABLE 6H-4 OF THE 2011 WAPM.
- 6) EXISTING PAVEMENT MARKINGS THAT CONFLICT WITH PROPOSED TEMPORARY LANE MARKINGS SHALL BE COMPLETELY ERADICATED.

WORKZONE APPROACH DETAIL 5 (FIGURE TTC-42.J) N.T.S.



R.O.W. PLANS

THESE PLANS ARE UNFINISHED AND UNAPPROVED AND ARE NOT TO BE USED FOR ANY TYPE OF CONSTRUCTION.

PROJECT	SHEET NO.
0638-029-156	1K(19)

PROJECT MANAGER: Chris Barksdale, PE (703) 259-2768, JNOVA
SURVEYED BY, DATE: Brian Elchech, L.S. (703) 259-2355, JNOVA, August 2015
DESIGN BY: Tyler Long, PE, - Whitman, Requardt & Associates, (703) 293-9072
SUBSURFACE UTILITY BY, DATE: So-Deep, Inc., (703) 3616005, August 2015

TRANSPORTATION MANAGEMENT PLAN PHASE 4

REVISED	STATE	ROUTE	STATE PROJECT	SHEET NO.
	VA.	638	0638-029-156 P-104, R-204, C-504	1K(20)

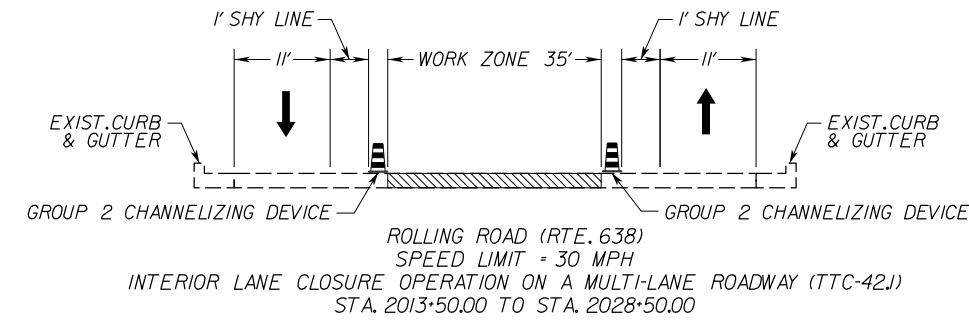
DESIGN FEATURES RELATING TO CONSTRUCTION OR TO REGULATION AND CONTROL OF TRAFFIC MAY BE SUBJECT TO CHANGE AS DEEMED NECESSARY BY THE DEPARTMENT

Whitman, Requardt & Associates
Fairfax, Virginia
ROADWAY ENGINEER



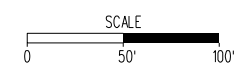
- NOTES**
- 1) SEE SHEET 1K(1) FOR SIGN LEGEND.
 - 2) PROJECT LIMITS SIGNING SHALL BE IN ACCORDANCE WITH FIGURE TTC-53.0 OF THE 2011WAPM.
 - 3) INSIDE LANE CLOSURE ON ROLLING ROAD SHALL BE IN ACCORDANCE WITH FIGURE TTC-17.1 OF THE 2011WAPM.
 - 4) MAINTAIN ACCESS TO ENTRANCES THROUGHOUT DURATION OF CONSTRUCTION.
 - 5) ALL CHANNELIZING DEVICE SPACING SHALL BE IN ACCORDANCE WITH TABLE 6H-4 OF THE 2011WAPM.
 - 6) EXISTING PAVEMENT MARKINGS THAT CONFLICT WITH PROPOSED TEMPORARY LANE MARKINGS SHALL BE COMPLETELY ERADICATED.

- LEGEND**
- WORK ZONE AREA
 - GROUP 2 CHANNELIZING DEVICE
 - TYPE 3 BARRICADE
 - TRAFFIC BARRIER SERVICE
 - TL-2 TEMP. ATTENUATOR
 - SIGN
 - EXISTING DIRECTION OF TRAVEL
 - TEMPORARY DIRECTION OF TRAVEL
 - WORK VEHICLE



R.O.W. PLANS

THESE PLANS ARE UNFINISHED AND UNAPPROVED AND ARE NOT TO BE USED FOR ANY TYPE OF CONSTRUCTION.



PROJECT	SHEET NO.
0638-029-156	1K(20)

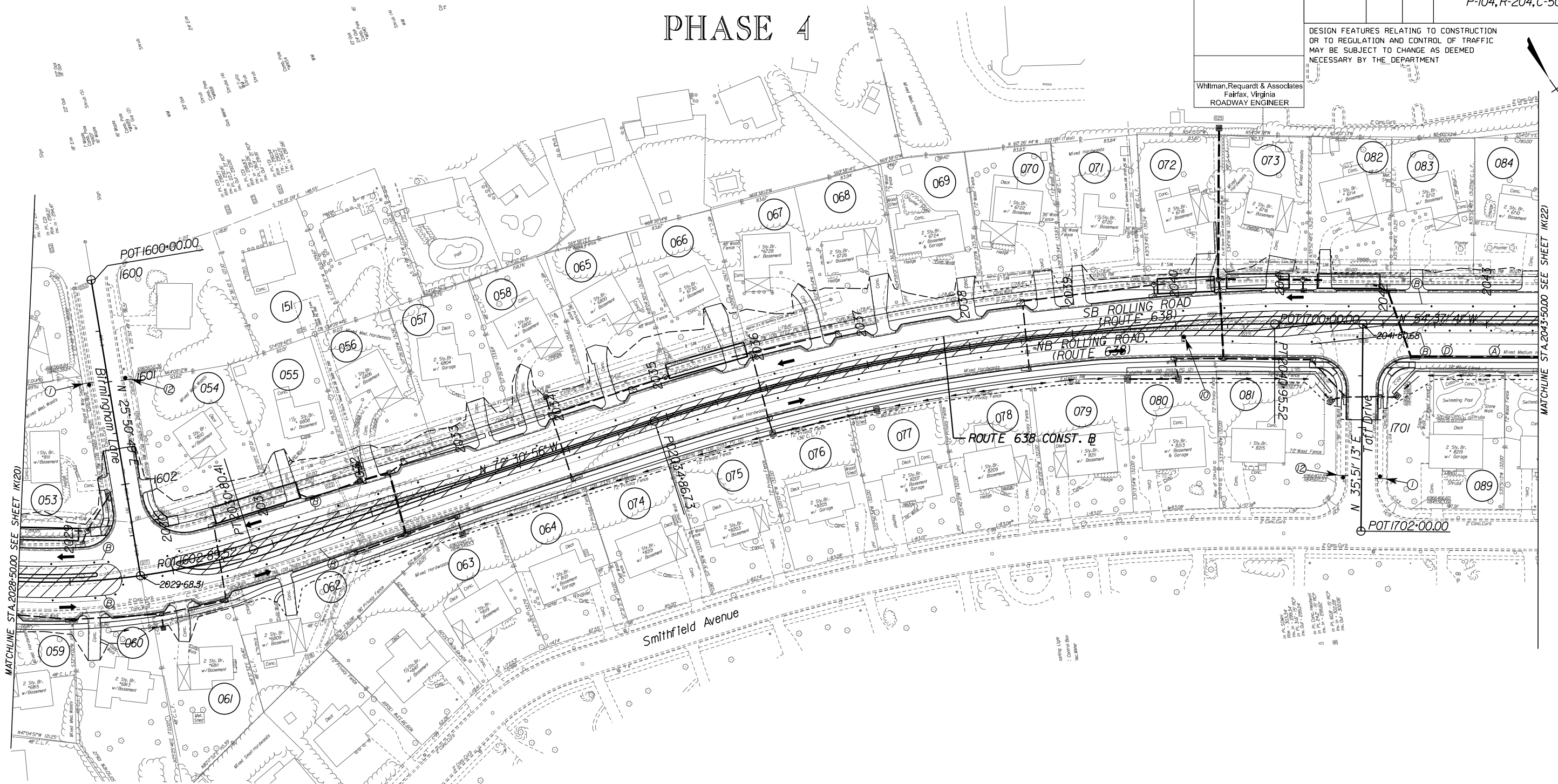
PROJECT MANAGER: Chris Barksdale, PE (703) 259-2768, INOVA
SURVEYED BY, DATE: Brian Elterich, L.S. (703) 259-2355, INOVA, August 2015
DESIGN BY: Tyler Long, PE, - WhitmanRequardt & Associates, (703) 293-9072
SUBSURFACE UTILITY BY, DATE: So Deep, Inc., (703) 361-6005, August 2015

TRANSPORTATION MANAGEMENT PLAN PHASE 4

REVISED	STATE	ROUTE	STATE PROJECT	SHEET NO.
	VA.	638	0638-029-156 P-104, R-204, C-504	1K(21)

DESIGN FEATURES RELATING TO CONSTRUCTION OR TO REGULATION AND CONTROL OF TRAFFIC MAY BE SUBJECT TO CHANGE AS DEEMED NECESSARY BY THE DEPARTMENT

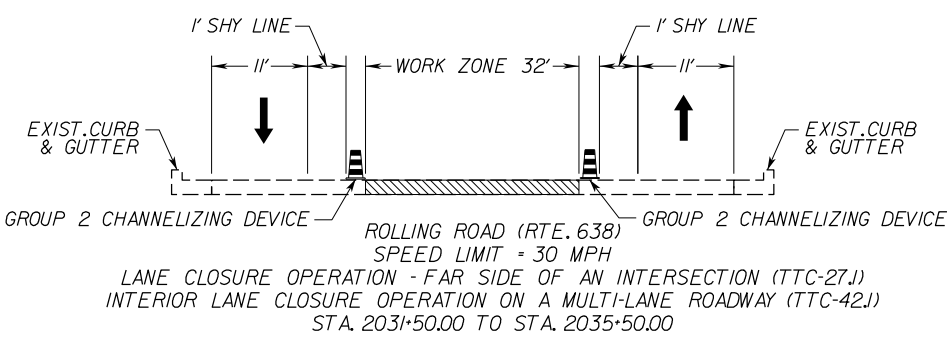
Whitman, Requardt & Associates
Fairfax, Virginia
ROADWAY ENGINEER



LEGEND

	WORK ZONE AREA
	GROUP 2 CHANNELIZING DEVICE
	TYPE 3 BARRICADE
	TRAFFIC BARRIER SERVICE
	TL-2 TEMP. ATTENUATOR
	SIGN
	EXISTING DIRECTION OF TRAVEL
	TEMPORARY DIRECTION OF TRAVEL
	WORK VEHICLE

- NOTES**
- 1) SEE SHEET 1K(1) FOR SIGN LEGEND.
 - 2) PROJECT LIMITS SIGNING SHALL BE IN ACCORDANCE WITH FIGURE TTC-53.0 OF THE 2011 WAPM.
 - 3) INSIDE LANE CLOSURE ON ROLLING ROAD SHALL BE IN ACCORDANCE WITH FIGURE TTC-17.1 OF THE 2011 WAPM. LANE CLOSURE AT THE FAR SIDE OF AN INTERSECTION ON ROLLING ROAD SHALL BE IN ACCORDANCE WITH TTC-27.1.
 - 4) MAINTAIN ACCESS TO ENTRANCES THROUGHOUT DURATION OF CONSTRUCTION.
 - 5) ALL CHANNELIZING DEVICE SPACING SHALL BE IN ACCORDANCE WITH TABLE 6H-4 OF THE 2011 WAPM.
 - 6) EXISTING PAVEMENT MARKINGS THAT CONFLICT WITH PROPOSED TEMPORARY LANE MARKINGS SHALL BE COMPLETELY ERADICATED.



R.O.W. PLANS

THESE PLANS ARE UNFINISHED AND UNAPPROVED AND ARE NOT TO BE USED FOR ANY TYPE OF CONSTRUCTION.

PROJECT	SHEET NO.
0638-029-156	1K(21)

PROJECT MANAGER: Chris Barksdale, PE (703) 259-2768, INOVA
SURVEYED BY: DATE Brian Eltcher, L.S. (703) 259-2355, INOVA, August 2015
DESIGN BY: Tyler Long, PE, Whitman, Requardt & Associates, (703) 293-9072
SUBSURFACE UTILITY BY: DATE So-Deep, Inc., (703) 361-6005, August 2015

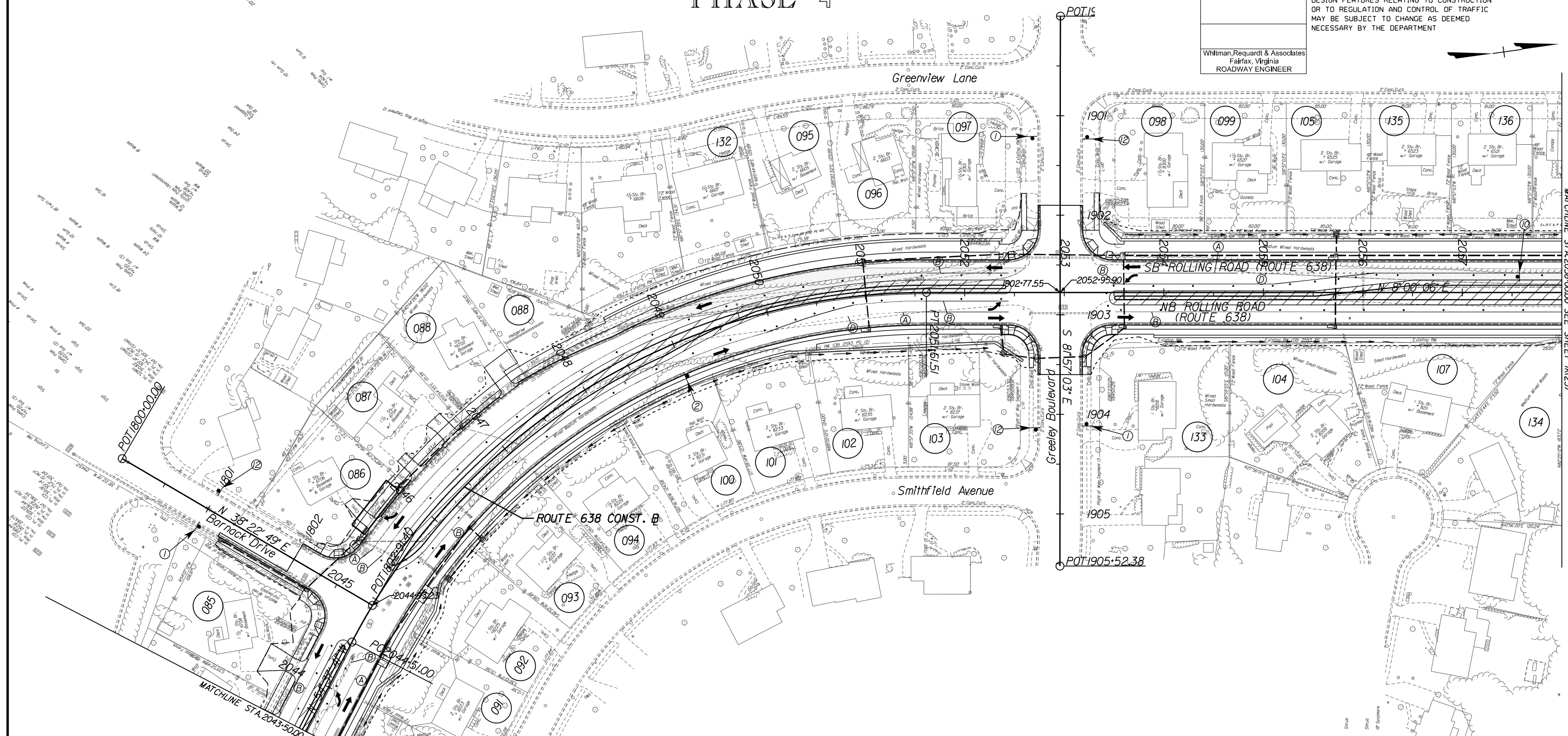
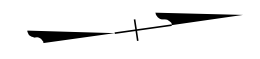
TRANSPORTATION MANAGEMENT PLAN

PHASE 4

REVISED	STATE	ROUTE	STATE PROJECT	SHEET NO.
	VA.	638	0638-029-156 P-104, R-204, C-504	1K(22)

DESIGN FEATURES RELATING TO CONSTRUCTION OR TO REGULATION AND CONTROL OF TRAFFIC MAY BE SUBJECT TO CHANGE AS DEEMED NECESSARY BY THE DEPARTMENT

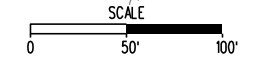
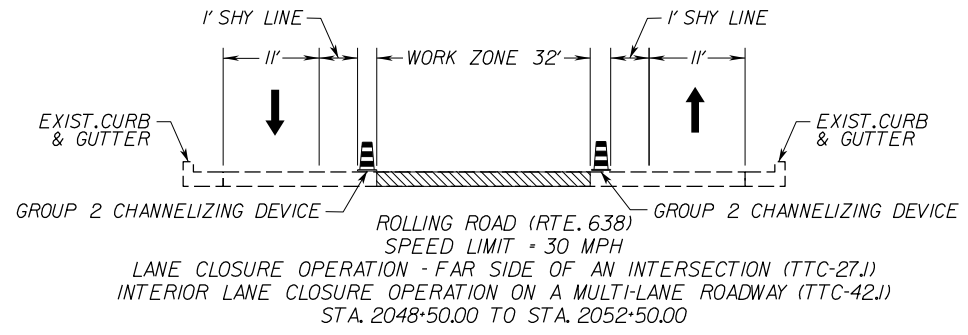
Whitman, Requardt & Associates
Fairfax, Virginia
ROADWAY ENGINEER



LEGEND

	WORK ZONE AREA
	GROUP 2 CHANNELIZING DEVICE
	TYPE 3 BARRICADE
	TRAFFIC BARRIER SERVICE
	TL-2 TEMP. ATTENUATOR
	SIGN
	EXISTING DIRECTION OF TRAVEL
	TEMPORARY DIRECTION OF TRAVEL
	WORK VEHICLE

- NOTES**
- 1) SEE SHEET 1K(1) FOR SIGN LEGEND.
 - 2) PROJECT LIMITS SIGNING SHALL BE IN ACCORDANCE WITH FIGURE TTC-53.0 OF THE 2011 WAPM.
 - 3) INSIDE LANE CLOSURE ON ROLLING ROAD SHALL BE IN ACCORDANCE WITH FIGURE TTC-17.1 OF THE 2011 WAPM. LANE CLOSURE AT THE FAR SIDE OF AN INTERSECTION ON ROLLING ROAD SHALL BE IN ACCORDANCE WITH TTC-27.1.
 - 4) MAINTAIN ACCESS TO ENTRANCES THROUGHOUT DURATION OF CONSTRUCTION.
 - 5) ALL CHANNELIZING DEVICE SPACING SHALL BE IN ACCORDANCE WITH TABLE 6H-4 OF THE 2011 WAPM.
 - 6) EXISTING PAVEMENT MARKINGS THAT CONFLICT WITH PROPOSED TEMPORARY LANE MARKINGS SHALL BE COMPLETELY ERADICATED.



R.O.W. PLANS

THESE PLANS ARE UNFINISHED AND UNAPPROVED AND ARE NOT TO BE USED FOR ANY TYPE OF CONSTRUCTION.

PROJECT	SHEET NO.
0638-029-156	1K(22)

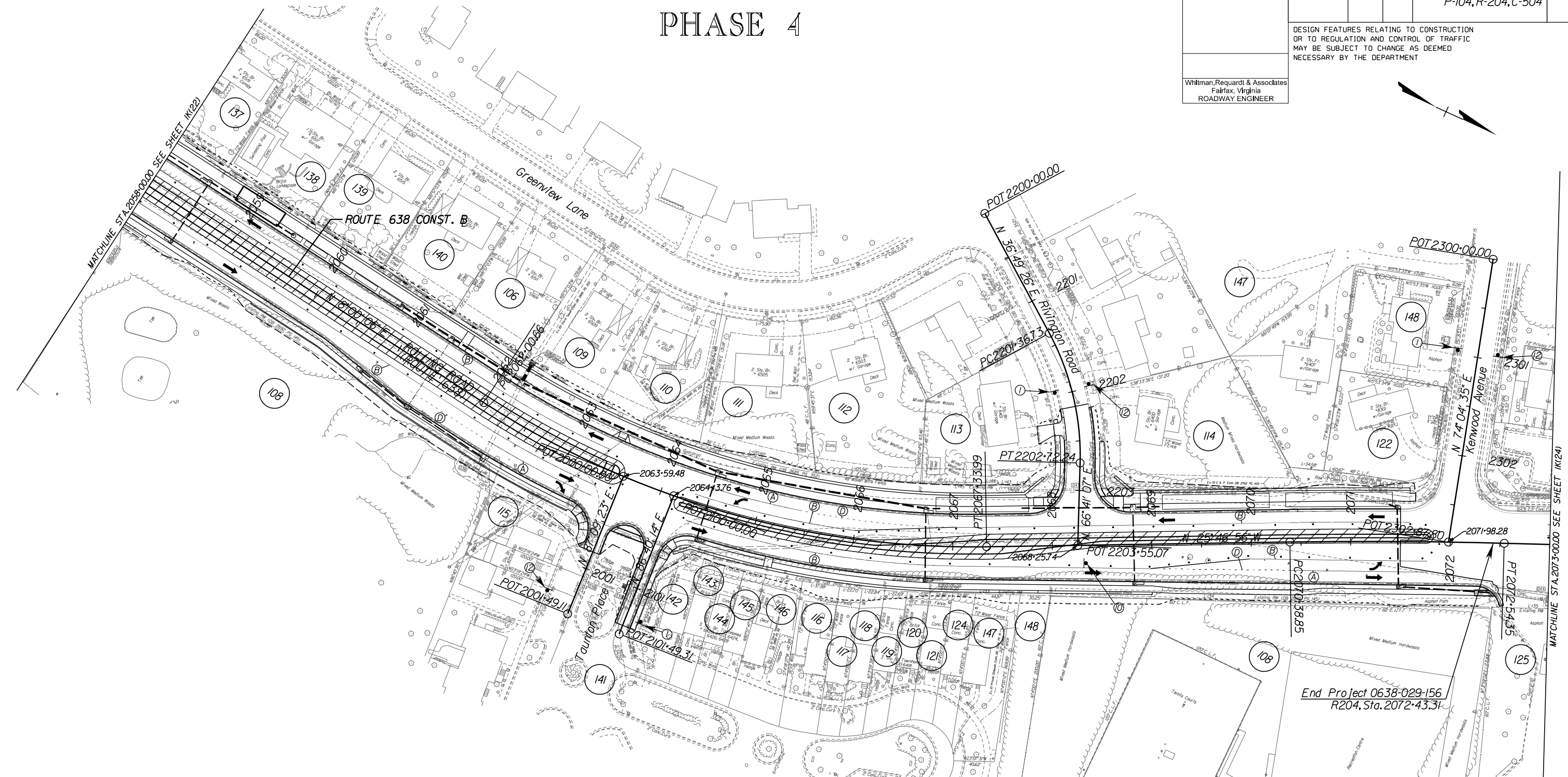
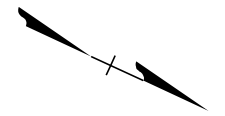
PROJECT MANAGER: Chris Barksdale, PE (703) 259-2768 JNQ/AL
SURVEYED BY, DATE: Brian Eltcher, LS (703) 259-2355 JNQ/AL, August 2015
DESIGN BY: Tyler Long, PE - Whitman, Requardt & Associates (703) 293-9072
SUBSURFACE UTILITY BY, DATE: So-Deep, Inc. (703) 361-6005, August 2015

TRANSPORTATION MANAGEMENT PLAN PHASE 4

REVISED	STATE	ROUTE	STATE PROJECT	SHEET NO.
	VA.	638	0638-029-156 P-104, R-204, C-504	1K(23)

DESIGN FEATURES RELATING TO CONSTRUCTION OR TO REGULATION AND CONTROL OF TRAFFIC MAY BE SUBJECT TO CHANGE AS DEEMED NECESSARY BY THE DEPARTMENT

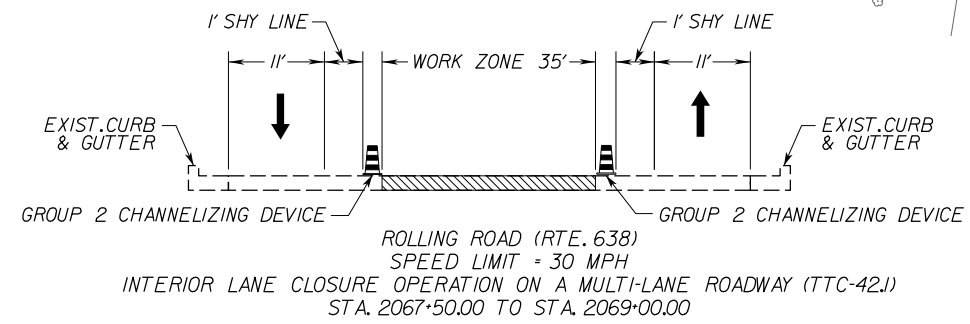
Whitman, Requardt & Associates
Fairfax, Virginia
ROADWAY ENGINEER



LEGEND

	WORK ZONE AREA
	GROUP 2 CHANNELIZING DEVICE
	TYPE 3 BARRICADE
	TRAFFIC BARRIER SERVICE
	TL-2 TEMP. ATTENUATOR
	SIGN
	EXISTING DIRECTION OF TRAVEL
	TEMPORARY DIRECTION OF TRAVEL
	WORK VEHICLE

- NOTES**
- 1.) SEE SHEET 1K(1) FOR SIGN LEGEND.
 - 2.) PROJECT LIMITS SIGNING SHALL BE IN ACCORDANCE WITH FIGURE TTC-53.0 OF THE 2011WAPM.
 - 3.) INSIDE LANE CLOSURE ON ROLLING ROAD SHALL BE IN ACCORDANCE WITH FIGURE TTC-17.1 OF THE 2011WAPM.
 - 4.) MAINTAIN ACCESS TO ENTRANCES THROUGHOUT DURATION OF CONSTRUCTION.
 - 5.) ALL CHANNELIZING DEVICE SPACING SHALL BE IN ACCORDANCE WITH TABLE 6H-4 OF THE 2011WAPM.
 - 6.) EXISTING PAVEMENT MARKINGS THAT CONFLICT WITH PROPOSED TEMPORARY LANE MARKINGS SHALL BE COMPLETELY ERADICATED.



R.O.W. PLANS

THESE PLANS ARE UNFINISHED AND UNAPPROVED AND ARE NOT TO BE USED FOR ANY TYPE OF CONSTRUCTION.

PROJECT	SHEET NO.
0638-029-156	1K(23)

PROJECT MANAGER: Chris Barksdale, PE (703) 259-2768 (NVA)
SURVEYED BY: DATE Brian Eitelcher, L.S. (703) 259-2355 (NVA), August 2015
DESIGN BY: Tyler Long, PE - Whitman, Requardt & Associates, (703) 293-9072
SUBSURFACE UTILITY BY: DATE So Deep, Inc. (703) 3616005, August 2015

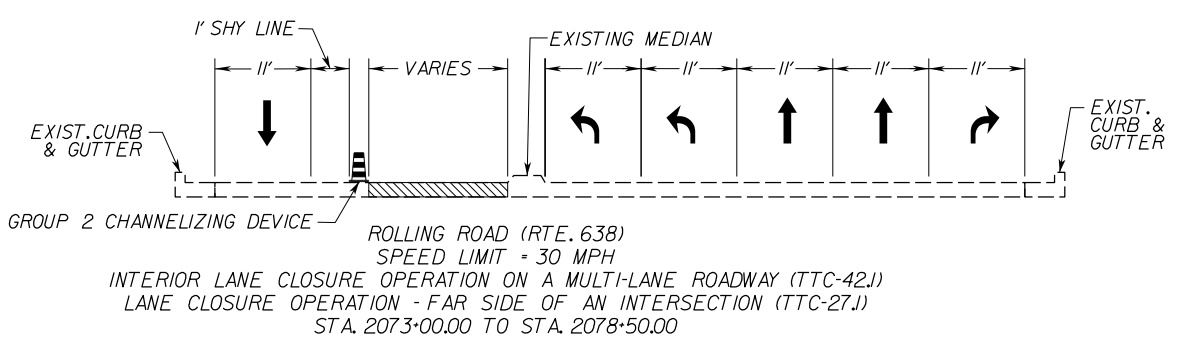
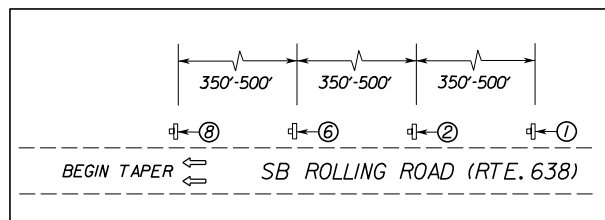
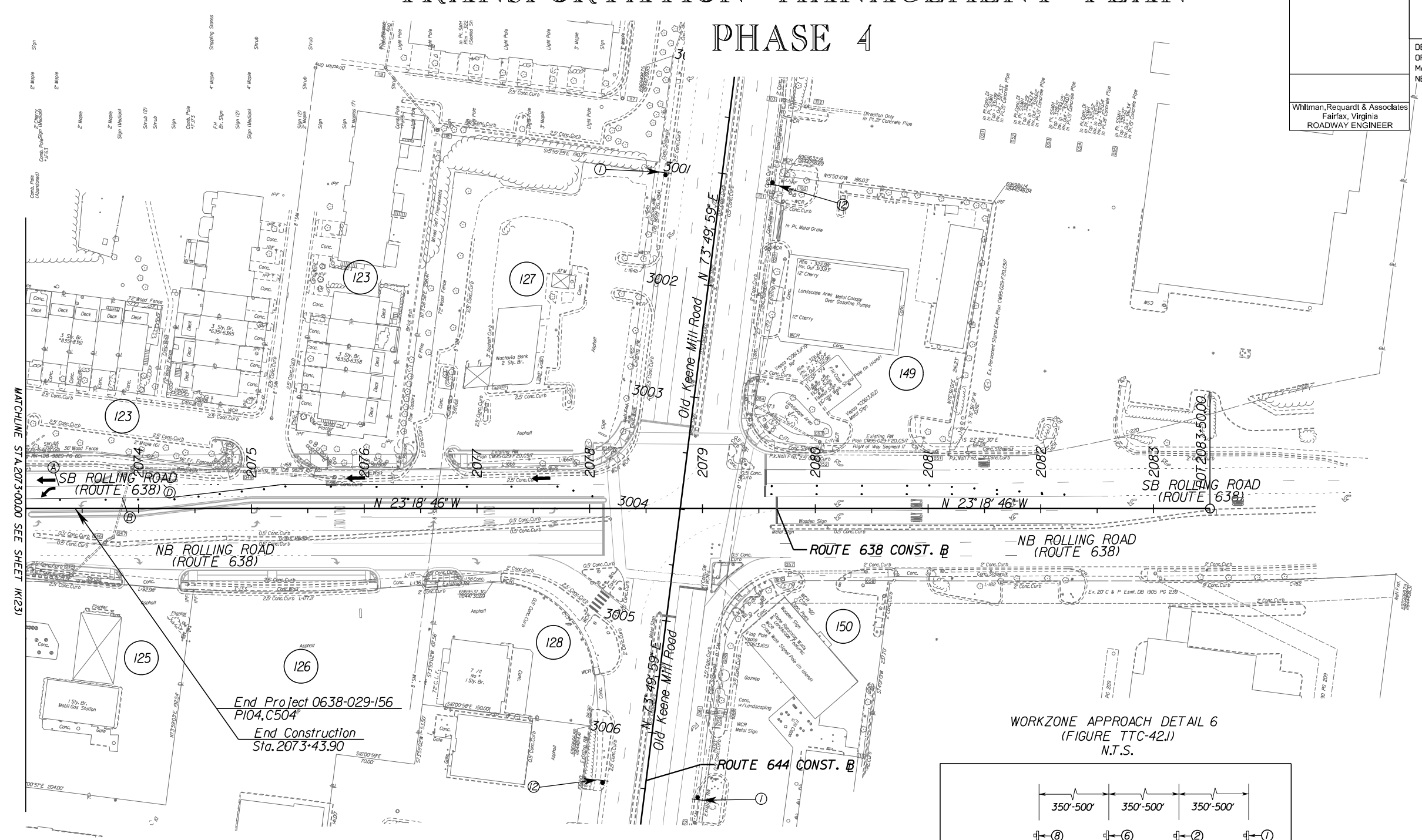
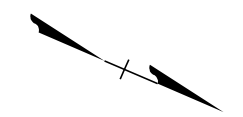
TRANSPORTATION MANAGEMENT PLAN

PHASE 4

REVISED	STATE	ROUTE	STATE PROJECT	SHEET NO.
	VA.	638	0638-029-156 P-104, R-204, C-504	1K(24)

DESIGN FEATURES RELATING TO CONSTRUCTION OR TO REGULATION AND CONTROL OF TRAFFIC MAY BE SUBJECT TO CHANGE AS DEEMED NECESSARY BY THE DEPARTMENT

Whitman, Requardt & Associates
Fairfax, Virginia
ROADWAY ENGINEER

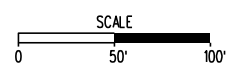


R.O.W. PLANS

THESE PLANS ARE UNFINISHED AND UNAPPROVED AND ARE NOT TO BE USED FOR ANY TYPE OF CONSTRUCTION.

- LEGEND**
- WORK ZONE AREA
 - GROUP 2 CHANNELIZING DEVICE
 - TYPE 3 BARRICADE
 - TRAFFIC BARRIER SERVICE
 - TL-2 TEMP. ATTENUATOR
 - SIGN
 - EXISTING DIRECTION OF TRAVEL
 - TEMPORARY DIRECTION OF TRAVEL
 - WORK VEHICLE

- NOTES**
- 1) SEE SHEET 1K(1) FOR SIGN LEGEND.
 - 2) PROJECT LIMITS SIGNING SHALL BE IN ACCORDANCE WITH FIGURE TTC-53.0 OF THE 2011WAPM.
 - 3) INSIDE LANE CLOSURE SHALL BE IN ACCORDANCE WITH FIGURE TTC-27.J OF THE 2011WAPM. LANE CLOSURE ON THE FAR SIDE OF AN INTERSECTION ON ROLLING ROAD SHALL BE IN ACCORDANCE WITH FIGURE TTC-27.J OF THE 2011WAPM.
 - 4) MAINTAIN ACCESS TO ENTRANCES THROUGHOUT DURATION OF CONSTRUCTION.
 - 5) ALL CHANNELIZING DEVICE SPACING SHALL BE IN ACCORDANCE WITH TABLE 6H-4 OF THE 2011WAPM.
 - 6) EXISTING PAVEMENT MARKINGS THAT CONFLICT WITH PROPOSED TEMPORARY LANE MARKINGS SHALL BE COMPLETELY ERADICATED.



PROJECT	SHEET NO.
0638-029-156	1K(24)