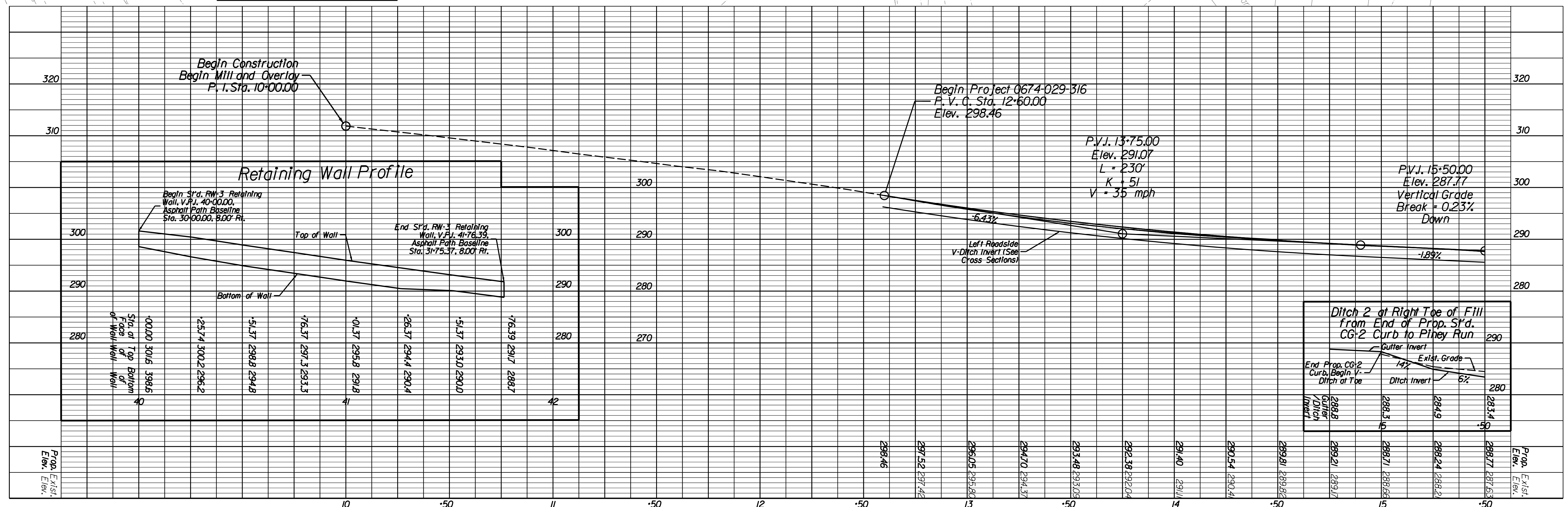
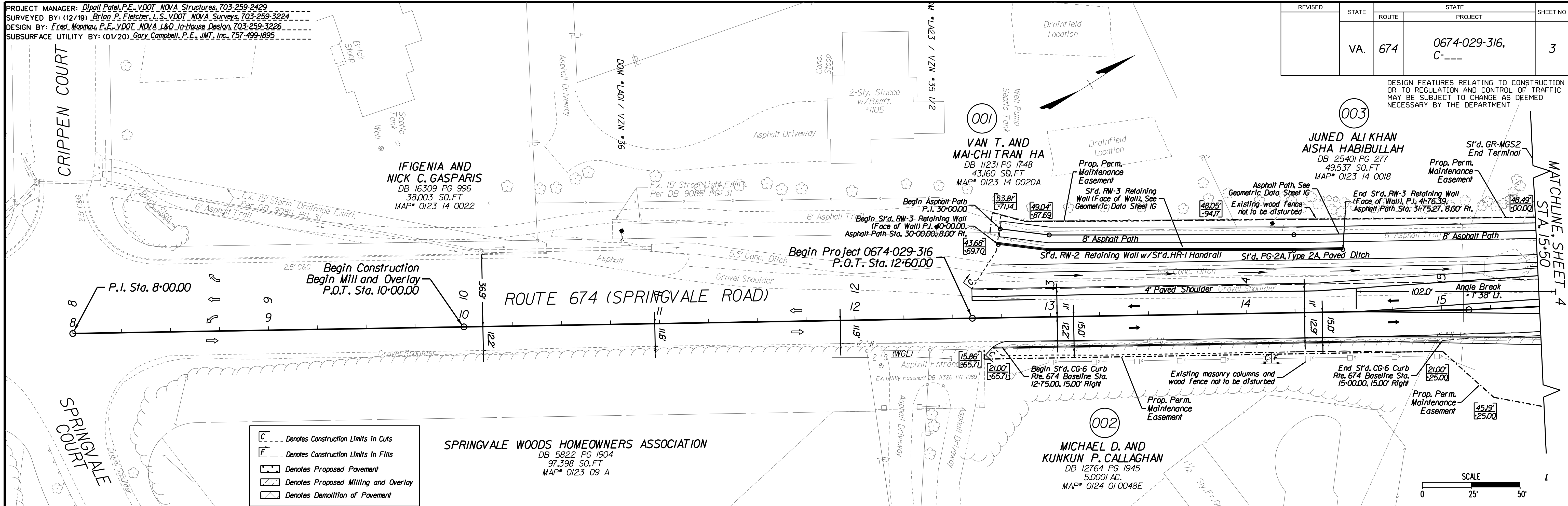


PROJECT MANAGER: *Dipali Patel, P.E., VDOT, NOVA Structures, 703-259-2429*
 SURVEYED BY: (12/19) *Brian P. Fletcher, L.S., VDOT, NOVA Surveys, 703-259-3224*
 DESIGN BY: *Fred Moomaw, P.E., VDOT, NOVA L&D In-House Design, 703-259-3226*
 SUBSURFACE UTILITY BY: (01/20) *Gary Campbell, P.E., JMT, Inc., 757-499-1895*

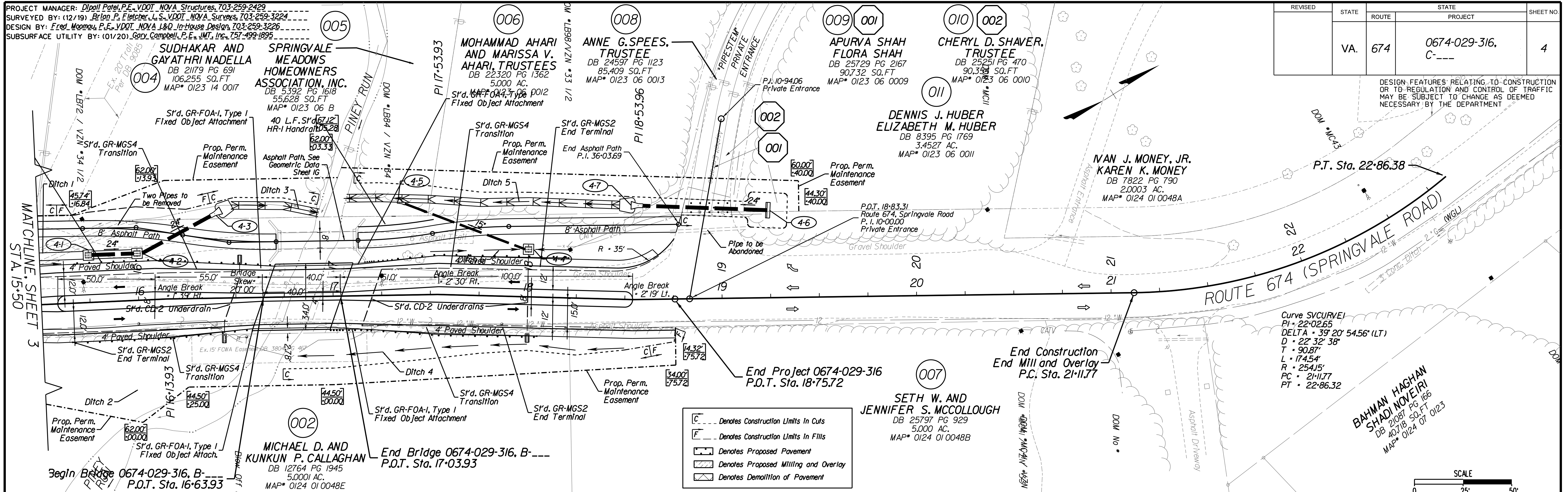
| REVISED | STATE | ROUTE | PROJECT | SHEET NO. |
|---------|-------|-------|------------------------|-----------|
| | VA. | 674 | 0674-029-316, C-___ | 3 |

DESIGN FEATURES RELATING TO CONSTRUCTION OR TO REGULATION AND CONTROL OF TRAFFIC MAY BE SUBJECT TO CHANGE AS DEEMED NECESSARY BY THE DEPARTMENT



PROJECT MANAGER: Dipali Patel, P.E., VDOT, NOVA Structures, 703-259-2429
 SURVEYED BY: (12/19) Brian P. Fletcher, L.S., VDOT, NOVA Surveys, 703-259-3224
 DESIGN BY: Fred Moomaw, P.E., VDOT, NOVA L&D, In-House Design, 703-259-3226
 SUBSURFACE UTILITY BY: (01/20) Gary Campbell, P.E., JMT, Inc., 757-499-1895

| REVISED | STATE | ROUTE | PROJECT | SHEET NO. |
|---------|-------|-------|------------------------|-----------|
| | VA. | 674 | 0674-029-316, C-___ | 4 |



Legend

- Denotes Construction Limits in Cuts
- Denotes Construction Limits in Fills
- Denotes Proposed Pavement
- Denotes Proposed Milling and Overlay
- Denotes Demolition of Pavement

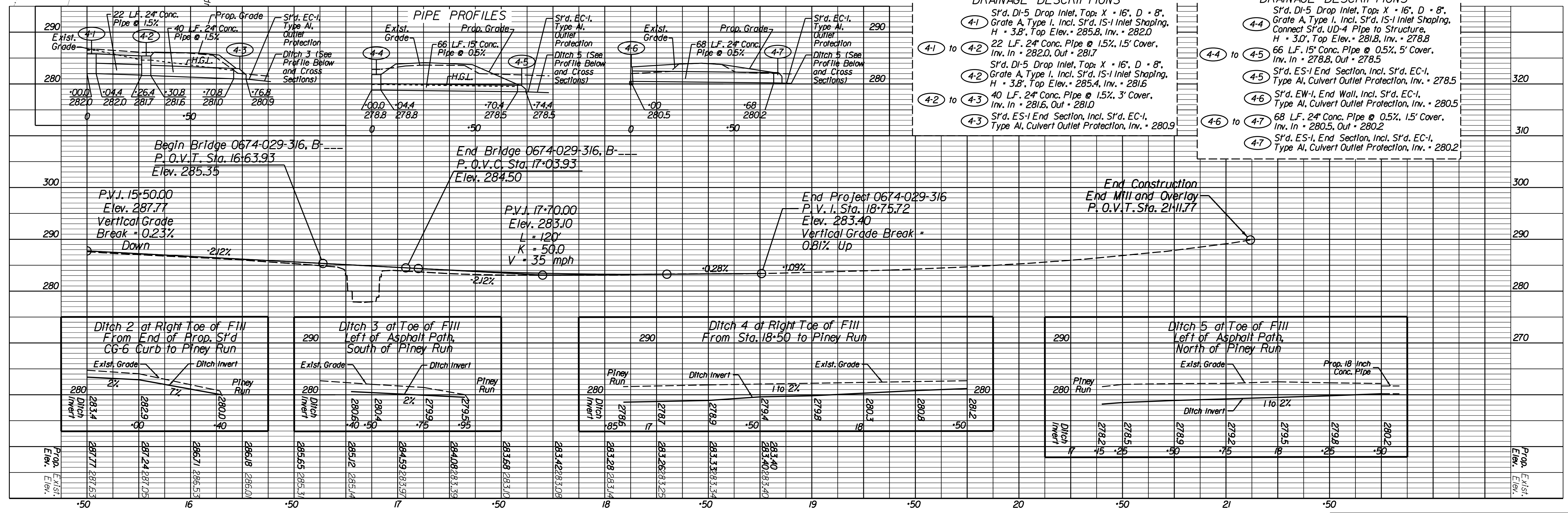
Curve SVCURVEI
 PI = 22+02.65
 DELTA = 39 20' 54.56" (LT)
 D = 22 32' 38"
 T = 90.87'
 L = 174.54'
 R = 254.15'
 PC = 21+11.77
 PT = 22+86.32

DRAINAGE DESCRIPTIONS

| | |
|------------|---|
| 4-1 | Sr'd. DI-5 Drop Inlet, Top: X = 16", D = 8", Grate A, Type I, Incl. Sr'd. IS-1 Inlet Shaping, H = 3.8", Top Elev. = 285.8, Inv. = 282.0 |
| 4-1 to 4-2 | 22 LF. 24" Conc. Pipe @ 1.5%, 1.5' Cover, Inv. In = 282.0, Out = 281.7 |
| 4-2 | Sr'd. DI-5 Drop Inlet, Top: X = 16", D = 8", Grate A, Type I, Incl. Sr'd. IS-1 Inlet Shaping, H = 3.8", Top Elev. = 285.4, Inv. = 281.6 |
| 4-2 to 4-3 | 40 LF. 24" Conc. Pipe @ 1.5%, 3' Cover, Inv. In = 281.6, Out = 281.0 |
| 4-3 | Sr'd. ES-1 End Section, Incl. Sr'd. EC-1, Type AI, Culvert Outlet Protection, Inv. = 280.9 |

DRAINAGE DESCRIPTIONS

| | |
|------------|---|
| 4-4 | Sr'd. DI-5 Drop Inlet, Top: X = 16", D = 8", Grate A, Type I, Incl. Sr'd. IS-1 Inlet Shaping, Connect Sr'd. UD-4 Pipe to Structure, H = 3.0", Top Elev. = 281.8, Inv. = 278.8 |
| 4-4 to 4-5 | 66 LF. 15" Conc. Pipe @ 0.5%, 5' Cover, Inv. In = 278.8, Out = 278.5 |
| 4-5 | Sr'd. ES-1 End Section, Incl. Sr'd. EC-1, Type AI, Culvert Outlet Protection, Inv. = 278.5 |
| 4-6 | Sr'd. EW-1, End Wall, Incl. Sr'd. EC-1, Type AI, Culvert Outlet Protection, Inv. = 280.5 |
| 4-6 to 4-7 | 68 LF. 24" Conc. Pipe @ 0.5%, 1.5' Cover, Inv. In = 280.5, Out = 280.2 |
| 4-7 | Sr'd. ES-1, End Section, Incl. Sr'd. EC-1, Type AI, Culvert Outlet Protection, Inv. = 280.2 |



Ditch Profiles

| Ditch | Station | Prop. Grade | Exist. Grade | Ditch Invert |
|---------|---------|-------------|--------------|--------------|
| Ditch 2 | 15+50 | 287.77 | 287.77 | 287.77 |
| | 16+00 | 287.77 | 287.77 | 287.77 |
| | 16+50 | 287.77 | 287.77 | 287.77 |
| | 17+00 | 287.77 | 287.77 | 287.77 |
| Ditch 3 | 17+00 | 283.10 | 283.10 | 283.10 |
| | 17+50 | 283.10 | 283.10 | 283.10 |
| | 18+00 | 283.10 | 283.10 | 283.10 |
| | 18+50 | 283.10 | 283.10 | 283.10 |
| Ditch 4 | 18+50 | 283.40 | 283.40 | 283.40 |
| | 19+00 | 283.40 | 283.40 | 283.40 |
| | 19+50 | 283.40 | 283.40 | 283.40 |
| | 20+00 | 283.40 | 283.40 | 283.40 |
| Ditch 5 | 21+00 | 283.40 | 283.40 | 283.40 |
| | 21+50 | 283.40 | 283.40 | 283.40 |
| | 22+00 | 283.40 | 283.40 | 283.40 |
| | 22+50 | 283.40 | 283.40 | 283.40 |