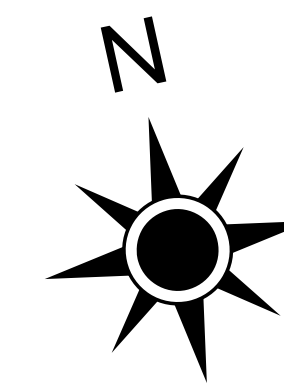
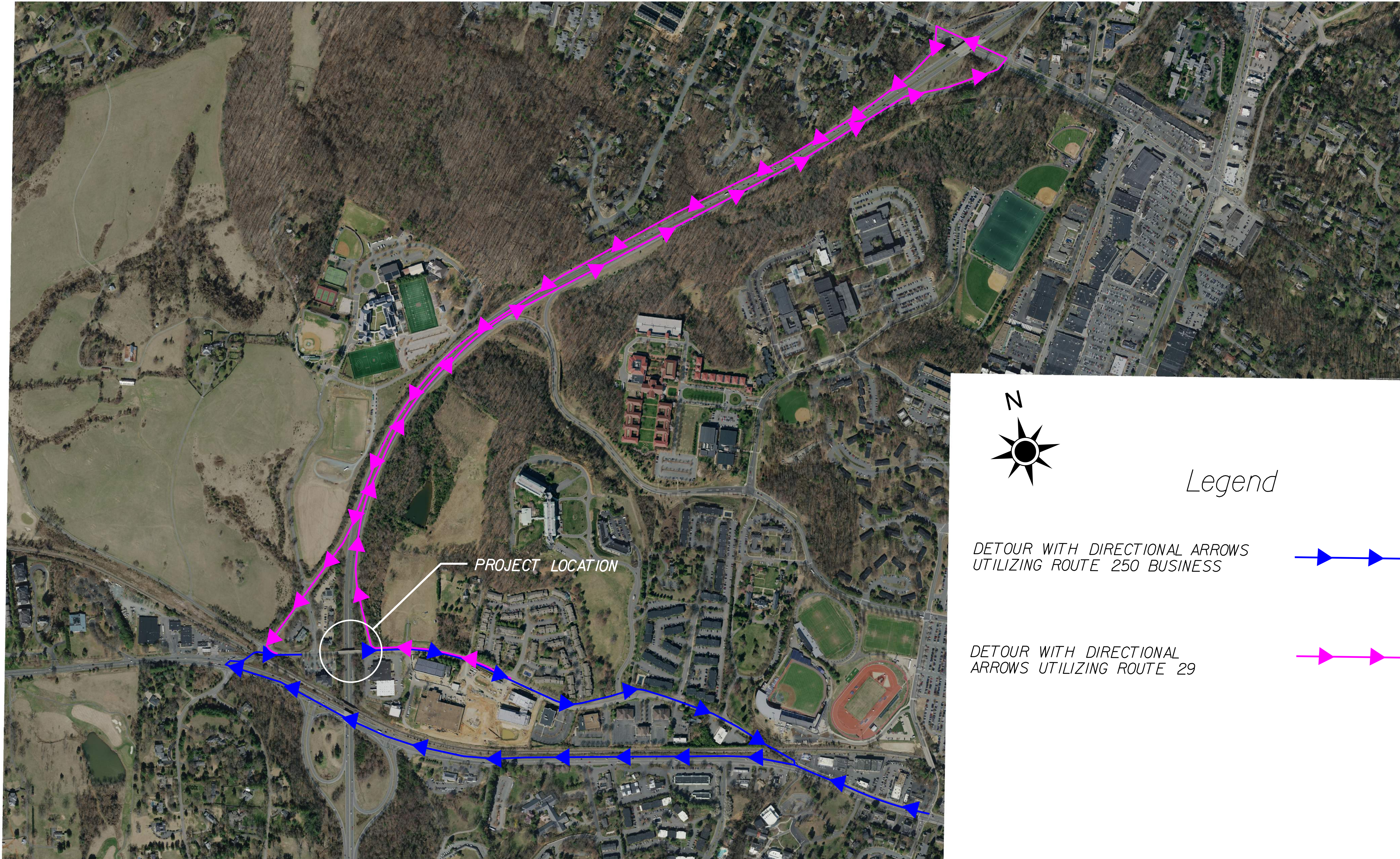


Route 601 Westbound Detour

Superstructure Replacement on Rte. 601 over Rte. 29/250 Bypass



Legend

DETOUR WITH DIRECTIONAL ARROWS UTILIZING ROUTE 250 BUSINESS



DETOUR WITH DIRECTIONAL ARROWS UTILIZING ROUTE 29

